



**ALAMO RMA**  
Alamo Regional Mobility Authority  
"Moving people faster"

**AGENDA**

**ALAMO REGIONAL MOBILITY AUTHORITY  
REGULAR BOARD OF DIRECTORS MEETING**

**Alamo Area Council of Governments  
8700 Tesoro Drive, Suite 100  
San Antonio, Texas  
September 9, 2010  
1:00 p.m.**

**PUBLIC COMMENT**

Individuals may sign up to speak on any item shown below on the agenda. Individuals interested in speaking must sign up to speak prior to the item being placed in consideration before the Board of Directors. Speakers are allotted no more than 3 minutes to speak and time is not transferable between speakers. Any comments, which do not address a specific agenda item, must be made during the Citizens' Communications portion of the agenda, provided the individual has signed to speak prior to this period starting.

- 1) Call meeting to order
- 2) Approval of minutes from the Regular Board of Directors Meeting of August 12, 2010
- 3) Discussion and appropriate action on a resolution adopting a revised Fiscal Year 2009-2010 Annual Operating and Capital Budget and adopting the Fiscal Year 2010-2011 Annual Operating and Capital Budget (Terry Brechtel / Milo Nitschke) (Resolution No. 10-30)
- 4) Discussion and appropriate action on a resolution authorizing maintaining the current Texas County & District Retirement System plan provisions with no change for members in plan year 2011 (Terry Brechtel/Carrie Conner) (Resolution No. 10-31)
- 5) Discussion and appropriate action on a resolution approving a change order for the U.S. 281 Super Street Project (Terry Brechtel/Pat Irwin) (Resolution No. 10-32)
- 6) Discussion and appropriate action on the financial statements for the period ending August 31, 2010 (Terry Brechtel / Carrie Conner)
- 7) Executive Director's Report
  - A) Board Calendar and notification of upcoming events
  - B) Status report on GEC work authorizations
  - C) Monthly Update on US 281/1604 Interchange Project
  - D) Monthly Update on US 281 Super Street Project
  - E) Monthly Update on Loop 1604 Super Street Project
  - F) Monthly Update on US 281 Environmental Impact Statement
  - G) Monthly Update on Loop 1604 Environmental Impact Statement
  - H) Legislative Update
- 8) Citizens' Communications (citizens must sign the register to speak)

9) Executive Session - Pursuant to Chapter 551, Subchapter D, Texas Government Code

- At any time during the meeting of the Alamo RMA Board of Directors, the Board may meet in executive session for consultation concerning attorney-client matters (real estate, litigation, contracts, personnel, and security) under Chapter 551 of the Texas Government Code:
  - A. Subsection 551.071(1). Consultation with Attorney – Consultation with, and advice from legal counsel concerning pending/contemplated litigation, including but not limited to *Aquifer Guardians in Urban Areas and Texans Uniting for Reform and Freedom v. United States Federal Highway Administration et. al*, settlement offers and negotiations, and other legal issues.
  - B. Section 551.074. Personnel Matters – Deliberation concerning the appointment, employment, reassignment, evaluation, duties, discipline, and/or dismissal of personnel.
  - C. Section 551.072. Deliberation Regarding Real Property - Discussion of real property purchase, exchange, lease, license, gift, donation, and/or negotiated settlement, including property to be acquired for right-of-way.

10) Adjournment

**NOTES**

Agenda item numbers are assigned for ease of reference only, and do not necessarily reflect the order of their consideration by the Alamo RMA Board of Directors.

**ALAMO REGIONAL MOBILITY AUTHORITY ACCESSIBILITY STATEMENT FOR DISABLED PERSONS**

This meeting site is accessible to disabled persons as follows: Entrance to Alamo Area Council of Governments is accessible through the main entrance at 8700 Tesoro Drive. Parking spaces reserved for the disabled are located at the main entrance. Persons with disabilities who plan to attend this meeting and who may need auxiliary aids or services, such as interpreters for persons who are deaf or hearing impaired, and readers of large print or Braille, are requested to contact Gayle McDaniel at (210) 495-5256 at least two working days prior to the meeting so that appropriate arrangements can be made.

Presenters with audiovisual needs are requested to contact Gayle McDaniel at (210) 495-5256, at least two working days prior to the meeting.

Posted at the Bexar County Courthouse and the Alamo RMA Administrative Offices (1222 N. Main, Ste 1000) at 12:00 p.m., Friday, September 3, 2010



**ALAMO RMA**  
*Alamo Regional Mobility Authority*  
"Moving people faster"

**Board Memorandum**

**To: Alamo RMA Board of Directors**  
**From: Terry M. Brechtel, Executive Director** *TMB*  
**Copies: File**  
**Date: Friday, September 3, 2010**

**Agenda Item 2: Approval of Minutes**

The minutes for the August 12, 2010 regular meeting of the Alamo RMA Board of Directors Meeting are attached for your review and consideration.

Staff recommends approval of these minutes.

*BOARD OF DIRECTORS*

*DR. WILLIAM E. THORNTON*  
**CHAIRMAN**

*ROBERT S. THOMPSON*  
**VICE-CHAIR**

*REYNALDO L. DIAZ, JR.*  
**SECRETARY/TREASURER**

*ARTHUR J. DOWNEY, JR*

*JAMES R. REED*

*ROBERT G. RODRIGUEZ*

*CHRISTEL VILLARREAL*

**TERRY M. BRECHTEL**  
**EXECUTIVE DIRECTOR**

**Page Intentionally Blank**

Alamo Regional Mobility Authority

*Meeting August 12, 2010, 1:00p.m.,  
Al J. Notzon III Conference Room  
Alamo Area Council Of Governments, at 8700 Tesoro Drive.*

Minutes

1. **Call meeting to order.** Chairman Thornton called the meeting to order at 1:00 p.m. All Board members present except Jim Reed.
2. **Approval of minutes from the Regular Board of Directors Meeting of May 13, 2010.** R. Thompson made the motion to approve the minutes as presented to the Board. R. Diaz seconded. All voted in favor.
3. **Designation by the Chairman of the Alamo RMA of the members Executive Committee.** Chairman Thornton stated that this item did not require Board action as it was being done on his action pursuant to the bylaws. He stated that the Planning Committee and Finance Committee are working committees and there are times it is important to have meetings of the Executive Committee for coordination of those committees and not for business or deliberation. He stated that the Executive Committee will be composed of the Chairman and the two Chairs of the Finance and Planning Committees.
4. **Presentation by US 281 EIS Intern Program on Context Sensitive Solutions.** Chairman Thornton brought forward agenda item 9 for introduction by R. Thompson. R. Thompson stated that the Jacobs team employed UTSA students as interns to develop a proposal utilizing the Context Sensitive Solutions program being promoted by FHWA. The interns introduced themselves and made a presentation. A discussion followed regarding the benefits to the students for this type of internship program. R. Thompson stated that the RMA needs to bring in SAWS and CPS on these issues for the EIS process. Jimmy Robertson stated that Jacobs enjoyed the process and T. Brechtel stated that we want to have them make the same presentation to the citizen advisory committees. Chairman Thornton asked if we are working with the City, County, VIA, SAWS and CPS and J. Robertson answered yes and that we will work with R. Thompson to get access to these entities to make the CSS presentation, R. Diaz stated that they did a great job and the presentation should be put on a DVD with their voices for future presentations.
5. **Discussion and appropriate action on a resolution approving a second amendment to the Financial Assistance Agreement with the Texas Department of Transportation for the Loop 1604 project (Terry Brechtel) (Resolution No. 10-26) and a resolution approving a first amendment to the Amended and Restated Financial Assistance Agreement with the Texas Department of Transportation for the U.S. 281 North project (Terry Brechtel) (Resolution No. 10-27).** Chairman Thornton combined agenda items 4 and 5. T. Brechtel stated these resolutions approve amendments to the outstanding financial assistance agreements with TxDOT to incorporate the approved indirect cost rate of the RMA. The staff of the RMA developed in-house an indirect cost rate. *R. Thompson made the motion to approve the resolutions as presented to the Board. A. Downey made the second.* C. Villarreal asked for the attachments to have added to the "Attachment A" in the future rather than just including them behind the resolution. R. Thompson asked for confirmation that 281 is a grant and 1604 is a loan and whether the loan is reduced once the work product is returned. T. Brechtel stated that yes, like we have done with Bandera and propose to do with Wurzbach Parkway, once those are no longer being developed

by the RMA we return the work product to TxDOT and they will process it and reduce the loan accordingly. *All voted in favor.*

6. **Discussion and appropriate action on a resolution terminating development authority for the Wurzbach Parkway Project and transferring work product associated with the project to the Texas Department of Transportation (Terry Brechtel/Milo Nitschke) (Resolution No. 10-28).** T. Brechtel stated that there had been prior actions terminating the RMA's development authority for Wurzbach Parkway and we want to initiate the process to transfer it back to TxDOT. T. Brechtel stated that the value of the work product is valued at approximately \$1.5million and upon approval of the resolution, staff will forward the documents to TxDOT and initiate the process for the TxDOT auditor to begin their reviews. T. Brechtel stated that this had been reviewed by the Finance Committee. *R. Diaz made the motion to approve the resolution. R. Thompson seconded.* R. Rodriguez stated that he had spoken with Milo Nitschke about a few questions and that the financial statements show a liability that includes the value of the work product for Bandera and Wurzbach Parkway and he is concerned about making sure these liabilities get reduced and he asked about I-35 and whether the same will be pursued. T. Brechtel stated that the I-35 project is still active and it is the current intent to conduct environmental studies on this corridor and we have current work product on this but don't currently intend to return it to TxDOT. R. Rodriguez asked if the liability shown for 1604 stays since it is a loan but not 281 since it is a grant and T. Brechtel confirmed that was true. R. Rodriguez then asked about the first \$1 million loan the RMA received to assist TxDOT with the evaluation of unsolicited proposals for 281 and 1604 and whether we need to discuss with TxDOT how to handle that return. T. Brechtel said she would follow up with TxDOT on that possibility. Brian Cassidy stated that he wanted to confirm that the advantage of the loans is that it allows the RMA to pay for work product in the development of projects and that if no project is developed, the work product is returned to TxDOT and the loan forgiven but that if a project goes forward, then the loan is paid back with project revenues. R. Thompson stated that the original City and County loans have no pledged fund or activity from which to pay it back. *All voted in favor.*
  
7. **Discussion and appropriate action on a resolution authorizing the approval of change orders by the Executive Director (Terry Brechtel/Lisa Adelman) (Resolution No. 10-29).** T. Brechtel stated that the proposed resolution would apply to construction and maintenance contracts and the RMA currently has 2 active contracts to which it will apply, the 281 Super Street and the Interchange, and it authorizes the Executive Director to approve change orders for each contract in a total amount up to the lesser of \$150,000 or 30% of the total contract amount. *A. Downey made the motion to approve the resolution. R. Diaz seconded.* A. Downey stated that it was reviewed and discussed in Planning Committee meeting. C. Villarreal stated that she had looked at the State of Texas and it was 25%. R. Thompson asked if there was a need for this and T. Brechtel stated that it will expedite the process during construction and it is the more conservative approach to limit it to a total of \$150,000 instead of that limit per change order. T. Brechtel stated that it may be necessary to come back to the Board for a larger authorization if it becomes too burdensome. R. Rodriguez asked about the chance of hitting that \$150,000 limit and T. Brechtel stated that is unknown. R. Diaz stated that the Executive Director needs some latitude but this a good conservative start and we can increase as necessary as we proceed. *All voted in favor.*

8. **Discussion and appropriate action on the financial statements for the period ending July 31, 2010 (Terry Brechtel / Carrie Conner).** T. Brechtel stated that since there was no June or July Board meeting, the financial statements being provided are July 31 which include the figures from May and June and did not want to duplicate the process by including those individual statements as the numbers are included in the July 31 statements. Carrie Conner reviewed the balance sheet statements which includes income, liabilities and deferred revenue, the statement of capitalized costs, the statement of revenue, expenses and changes in fund deficit, and the statement of cash flow. *R. Diaz made the motion to accept the Financial Statements as presented to the Board. R. Rodriguez seconded.* R. Diaz stated that he and C. Villarreal reviewed it in the Finance Committee. R. Rodriguez had a question about deferred income and what is spent versus unspent and C. Conner stated that that change reflects prior reliance on loans and now utilizing grants. R. Rodriguez asked about the difference in the budgeted amounts for salary and C. Conner stated that the reason was a change from professional services to salary category. C. Conner stated that she would be back before the Board next month with a revised 2009-2010 budget for review and approval. *All voted in favor.*
9. **Executive Director's Report.** T. Brechtel reviewed the calendar items. She stated that she and Leroy Alloway had made a presentation to over 500 NEISD employees discussing the 281 Super Street and how it would work. T. Brechtel reviewed the consultants reports included in the Board packet and that the 281 Super Street is expected to be open by October 1 due to a few rain delays and that for the 1604 Super Street the design is 100% complete and in Austin for review and approval and we anticipate approval of the CE by the end of August to meet the September 30 ARRA deadline. T. Brechtel stated that there is a partnering meeting next week for the Interchange project and currently performing geotechnical work using protocols approved by USF&WS. C. Villarreal stated that she could find no definition of "shovel-ready" in the ARRA guidelines and T. Brechtel agreed that that it is really a term of art. T. Brechtel stated that on the Interchange they are working on 30% design for the schematic and construction is anticipated to begin in October and the first draw has been approved. T. Brechtel stated that there is a tentative meeting date set for the 1604 EIS CAG and staff will be meeting with the EIS consultants and TxDOT and FHWA to discuss revised environmental review processes and that the EIS timelines may be adjusted.
10. **Board workshop to discuss the Alamo RMA 2011-2015 Strategic Plan.** Leroy Alloway made a power point presentation discussing the prior strategic plan and how the goals have been met. Chairman Thornton asked that both committees meet to review and provide comments on a proposed plan.
11. **Citizens' Communications.** None.
12. **Executive Session.** There was no Executive Session.
13. **Adjournment.** There being no further actions for the Board, Chairman Thornton called the meeting to adjournment at 2:45 p.m.

APPROVED:

\_\_\_\_\_  
DR. WILLIAM E. THORNTON, CHAIRMAN

DATE ADOPTED: 9/9/2010

I hereby certify that the above foregoing pages constitute the full, true, and correct minutes of all the proceedings and official records of the Alamo Regional Mobility Authority at its meeting on August 12, 2010.

ATTEST: \_\_\_\_\_

REYNALDO L. DIAZ, JR  
SECRETARY/TREASURER



**ALAMO RMA**  
*Alamo Regional Mobility Authority*  
"Moving people faster"

**Board Memorandum**

**To: Alamo RMA Board of Directors**

**From: Terry M. Brechtel, Executive Director** *TMB*

**Copies: File**

**Date: Friday, September 3, 2010**

**Agenda Item 3: Discussion and appropriate action on a resolution adopting a revised Fiscal Year 2009-2010 Annual Operating and Capital Budget and adopting the Fiscal Year 2010-2011 Annual Operating and Capital Budget**

The Alamo RMA operates on a October 1 through September 30 fiscal year. In accordance with this timeline, staff will bring forward a proposed operating and capital budget for Fiscal Year 2010-2011 for Board consideration at this meeting, to allow for adoption prior to the start of the next fiscal year.

Additionally, staff will present a revised Fiscal Year 2009-2010 operating and capital budget, reflecting cost savings realized since the last revised budget was presented last year to the Board.

Staff will make a formal presentation on this item at the September 9, 2010 Board meeting, and this budget has been presented to the Finance Committee prior to the presentation to the full Board.

Staff recommends approval of the revised Fiscal Year 2009-2010 Operating and Capital Budget, and approval of the Fiscal Year 2010-2011 Operating and Capital Budget.

The budgets have been approved by the Finance Committee.

*BOARD OF DIRECTORS*

*DR. WILLIAM E. THORNTON*  
CHAIRMAN

*ROBERT S. THOMPSON*  
VICE-CHAIR

*REYNALDO L. DIAZ, JR.*  
SECRETARY/TREASURER

*ARTHUR J. DOWNEY, JR*

*JAMES R. REED*

*ROBERT G. RODRIGUEZ*

*CHRISTEL VILLARREAL*

*TERRY M. BRECHTEL*  
EXECUTIVE DIRECTOR

Page Intentionally Blank

**GENERAL MEETING OF THE BOARD OF DIRECTORS  
OF THE  
ALAMO REGIONAL MOBILITY AUTHORITY**

**RESOLUTION NO. 10-30**

WHEREAS, the Alamo Regional Mobility Authority (“Alamo RMA”) was created pursuant to the request of Bexar County and in accordance with provisions of the Transportation Code and the petition and approval process established in 43 TEX. ADMIN. CODE § 26.01, *et. seq.* (the “RMA Rules”); and

WHEREAS, the Board of Directors of the Alamo RMA has been constituted in accordance with the Transportation Code and the RMA Rules; and

WHEREAS, prudent management and fiscal oversight are overriding objectives of the Alamo RMA Board of Directors; and

WHEREAS, it is necessary and desirable to develop and adopt a budget for Alamo RMA operations at the commencement of each fiscal year; and

WHEREAS, on September 3, 2009, the Alamo RMA Board of Directors approved an operating and capital budget for the 2009-2010 fiscal year (“Fiscal Year 2009-2010”); and

WHEREAS, the Alamo RMA staff has recommended certain revisions to the Fiscal Year 2009-2010 operating and capital budget for the remainder of the fiscal year as reflected in the amended budget attached hereto as Attachment “A” and Attachment “B;” and

WHEREAS, Fiscal Year 2009-2010 comes to a close on September 30, 2010; and

WHEREAS, the Alamo RMA staff has developed a proposed operating and capital budget for fiscal year 2010-2011 (“Fiscal Year 2010-2011”) attached hereto as Attachment “A” and Attachment “B.”

NOW THEREFORE, BE IT RESOLVED, that the Alamo RMA Board of Directors approves the amended operating and capital budget for Fiscal Year 2009-2010 attached hereto as Attachment “A” and Attachment “B” ; and

BE IT FURTHER RESOLVED that the Alamo RMA Board of Directors approves the proposed operating and capital budget for Fiscal Year 2010-2011 attached hereto as Attachment “A” and Attachment “B;” and

BE IT FURTHER RESOLVED, that the Fiscal Year 2009-2010 operating and capital budget may be further amended from time-to-time with the approval of the Board of Directors; and

Adopted by the Board of Directors of the Alamo Regional Mobility Authority on the 9th day of September, 2010.

Submitted and reviewed by:

Approved:

---

Terry M. Brechtel  
Executive Director for the  
Alamo Regional Mobility Authority

---

William E. Thornton  
Chairman, Board of Directors  
Resolution Number 10-30  
Date Passed 09/09/10



**ALAMO RMA**

*Alamo Regional Mobility Authority*

*"Moving people faster"*

**Revised Operating Budget: Fiscal Year 2010**

**Proposed Operating Budget &  
Capital Projects Budget: Fiscal Year 2011**

**September 3, 2010**

**Alamo Regional Mobility Authority**  
**Revised Operating Budget: Fiscal Year 2010**  
**Proposed Operating Budget & Capital Projects Budget: Fiscal Year 2011**

**Highlights**

**Revised Operating Budget: Fiscal Year 2010**

- Projected expenditures through September 30, 2010 are \$138,780 less than Fiscal Year 2010 adopted budget
- Revised fiscal year 2010 budget is reduced from \$1,784,741 to \$1,645,962 (\$138,779)
- One line item adjustment:
  - Administrative Assistant position became vacant in October 2010
  - Full-time Administrative Assistant position not filled
  - Administrative Assistant position work covered on part-time basis
  - \$35,000 reallocated from other professional services to payroll to cover part-time employment (20 hours per week) of Administrative Assistant

**Operating Budget: Fiscal Year 2011**

- Summary Operating Budget

Payroll	\$1,213,356
Office Space	102,758
Operating Expense	196,056
Professional Services	<u>70,000</u>
Total Operating Budget	\$1,582,170
Percent reduction from FY 2010	-11.350%
- No increase in base salaries
- Travel and training expense reduced to minimum to meet professional requirements
- No new equipment items
- Utilization of outside counsel and related fees for Alamo RMA operational and general legal issues have been reduced through the use in in-house legal counsel

**Capital Projects Budget (2009 through 2014)**

- Beginning in fiscal year 2009 eight projects were defined for preliminary work, development work and/or construction work. These projects are as follows:
  - Two Environmental Impact Statement Projects
    - ✓ US 281 from Loop 1604 north to the Bexar County Line (7.9miles)
    - ✓ Loop 1604 from Hwy 90 north and east to IH-35 (35 miles)

- Two Construction Projects
    - ✓ US 281 Super Street
    - ✓ Loop 1604/US 281 Interchange – South
  - Bexar County environmental clearance for Loop 1604 Super Street Project
  - On-going preliminary analyses, planning and evaluation for the development of Loop 1604
  - On-going preliminary analyses, planning and evaluation for the development of US 281 north of Loop 1604 to Bexar County line
  - General research and analyses
- 
- The capital projects budget reflects budgets for the aforementioned projects from inception (2009) through completion
  - The total value of the capital projects listed through 2014 is \$163,865,671
  - The proposed capital budget will provide the frame work to develop, design and structure a short-term, intermediate-term and long-term comprehensive development plan and plan of finance.

**Page Intentionally Blank**



# ALAMO RMA

Alamo Regional Mobility Authority

"Moving people faster"

To: **Alamo RMA Staff**  
From: **Carrie Conner**  
Subject: **2011 Holiday Calendar**  
Date: **October 1, 2010**

The official holidays recognized by the Alamo Regional Mobility Authority for the 2011 Calendar year are as follows:

**BOARD OF DIRECTORS**

*DR. WILLIAM E. THORNTON*  
**CHAIRMAN**

*ROBERT S. THOMPSON*  
**VICE-CHAIR**

*REYNALDO L. DIAZ, JR.*  
**SECRETARY/TREASURER**

*ARTHUR J. DOWNEY, JR*

*JAMES R. REED*

*ROBERT G. RODRIGUEZ*

*CHRISTEL VILLARREAL*

*TERRY M. BRECHTEL*  
**EXECUTIVE DIRECTOR**

<u>Holiday</u>	<u>Observed Date</u>
New Years Day	Friday, December 31, 2010
Martin Luther King's Birthday	Monday, January 17, 2011
Presidents Day	Monday, February 21, 2011
Battle of Flowers Parade Day	Friday, April 22, 2011
Memorial Day	Monday, May 30, 2011
Independence Day	Monday, July 4, 2011
Labor Day	Monday, September 5, 2011
Veterans Day	Friday, November 11, 2011
Thanksgiving Day	Thursday, November 24, 2011
Friday after Thanksgiving Day	Friday, November 25, 2011
Christmas Eve (Holiday Observed)	Friday, December 23, 2011
Christmas Day (Holiday Observed)	Monday, December 26, 2011

**Page Intentionally Blank**

**ATTACHMENT "A"**

**ALAMO**  
**REGIONAL MOBILITY AUTHORITY**  
 FY10 Revised Budget & FY10 Projected Operating Expense  
 FY11 Operating Budget

	FY10			FY10 PROJECTED OPERATING EXPENSE				FY11
	OPERATING BUDGET		Total	ACTUAL	PROJECTED	PROJECTED	INCREASE/ (DECREASE)	OPERATING BUDGET
	Adopted September 10, 2009	Revised September 9, 2010		Oct-July	Aug-Sept	September 30, 2010	from Revised Budget	Proposed September 9, 2010
<b>Operating Expense</b>								
Salary, Benefits and Retirement Expense	1,138,668	31,000	1,169,668	967,073	202,595	1,169,668	(0)	1,146,417
Payroll Tax Expense	66,528	4,000	70,528	58,730	11,798	70,528	0	66,939
Accrued Vacation	18,254		18,254	-	8,328	8,328	(9,926)	19,493
Professional & Contractual Services								
Financial/Accounting								
External Auditor	20,000		20,000	15,600	4,400	20,000		20,000
Legal								
Legal-General Counsel	35,000		35,000	17,914	3,450	21,364	(13,636)	20,000
Other Professional Services	75,000	(35,000)	40,000	1,300	1,500	2,800	(37,200)	30,000
Industry Conferences/Staff Development/Licensure	14,675		14,675	7,325	1,700	9,025	(5,650)	9,700
Business Travel	29,550		29,550	4,891	1,000	5,891	(23,659)	14,050
Mileage & Parking Reimbursement	12,600		12,600	7,027	1,400	8,427	(4,173)	10,200
Insurance Expense	14,771		14,771	9,941	1,534	11,475	(3,296)	12,300
Website Hosting	750		750	300	-	300	(450)	750
Telecommunications	20,100		20,100	9,872	3,000	12,872	(7,228)	15,000
Supplies, Printing, Postage, Equipment								
Supplies	6,619		6,619	3,105	750	3,855	(2,764)	5,000
Printing	6,000		6,000	4,676	-	4,676	(1,324)	9,500
Postage	3,000		3,000	1,961	500	2,461	(539)	4,000
Equipment Rental & Maintenance	35,052		35,052	30,717	6,530	37,247	2,195	37,500
Office Space	100,348		100,348	79,630	16,046	95,676	(4,672)	102,758
Meeting Expense	5,359		5,359	2,909	500	3,409	(1,950)	4,300
Memberships & Subscriptions								
Memberships	6,179		6,179	4,840	-	4,840	(1,339)	5,100
Books, Subscriptions & Reference	1,500		1,500	472	-	472	(1,028)	275
Advertising/Recruiting Costs	3,500		3,500	1,577	-	1,577	(1,923)	-
Miscellaneous Expense	2,239		2,239	1,721	300	2,021	(218)	2,239
Subtotal Operating Expense	1,615,691	-	1,615,691	1,231,581	265,331	1,496,913	(118,779)	1,535,521
<b>Non-Capitalized &amp; Capitalized Equip Purchases</b>	131,000		131,000	68,421	42,578	110,999	(20,001)	8,599
<b>Total Operating Expense</b>	1,746,691	-	1,746,691	1,300,002	307,909	1,607,912	(138,780)	1,544,120
<b>Nonoperating Expense</b>								
Interest Expense	38,050		38,050	31,710	6,340	38,050	-	38,050
<b>Total Operating &amp; Nonoperating Expense</b>	1,784,741	-	1,784,741	1,331,712	314,249	1,645,962	(138,780)	1,582,170

**ATTACHMENT "B"**

**Alamo Regional Mobility Authority**

**Capital Projects Budget**

**Fiscal Years 2009 through 2014**

	Fiscal Year 2009	Fiscal Year 2010	Fiscal Year 2011	Fiscal Year 2012	Fiscal Year 2013	Fiscal Year 2014	Grand Total
<b>US 281 Environment Impact Statement:</b>							
Procurement Costs	51,193.13	0.00	0.00	0.00	0.00	0.00	51,193.13
Environmental Costs	349,849.46	832,914.19	1,106,834.74	582,434.22	102,014.73	0.00	2,974,047.35
Design Costs	239,394.19	1,196,432.73	4,606.21	168,022.81	56,007.61	0.00	1,664,463.54
Right of Way Costs	0.00	0.00	0.00	0.00	0.00	0.00	0.00
Utility Costs	0.00	0.00	0.00	0.00	0.00	0.00	0.00
Construction Costs	0.00	0.00	0.00	0.00	0.00	0.00	0.00
Project Mgmt Costs	514,695.52	552,558.74	480,963.25	347,549.36	84,780.67	0.00	1,980,547.54
Public Involvement Costs	331,864.54	661,339.76	512,169.64	295,978.44	134,109.36	0.00	1,935,461.74
Construction Mgmt Costs	0.00	0.00	0.00	0.00	0.00	0.00	0.00
Total Project Cost	1,486,996.84	3,243,245.42	2,104,573.84	1,393,984.83	376,912.37	0.00	8,605,713.30
<b>Loop 1604 Environment Impact Statement:</b>							
Procurement Costs	0.00	0.00	0.00	0.00	0.00	0.00	0.00
Environmental Costs	132,398.17	2,088,227.10	756,802.19	426,238.43	0.00	0.00	3,403,665.90
Design Costs	255,663.48	1,746,559.65	434,640.77	356,715.84	0.00	0.00	2,793,579.73
Right of Way Costs	0.00	0.00	0.00	0.00	0.00	0.00	0.00
Utility Costs	0.00	0.00	0.00	0.00	0.00	0.00	0.00
Construction Costs	0.00	0.00	0.00	0.00	0.00	0.00	0.00
Project Mgmt Costs	306,465.36	944,821.26	670,571.68	396,043.09	55,679.68	0.00	2,373,581.07
Public Involvement Costs	275,500.00	1,440,801.82	859,762.68	452,304.99	102,478.62	0.00	3,130,848.11
Construction Mgmt Costs	0.00	0.00	0.00	0.00	0.00	0.00	0.00
Total Project Cost	970,027.01	6,220,409.83	2,721,777.32	1,631,302.35	159,158.30	0.00	11,701,674.81

**Alamo Regional Mobility Authority**

**Capital Projects Budget**

**Fiscal Years 2009 through 2014**

	Fiscal Year 2009	Fiscal Year 2010	Fiscal Year 2011	Fiscal Year 2012	Fiscal Year 2013	Fiscal Year 2014	Grand Total
<b>Loop 1604/US 281 Interchange - South</b>							
Procurement Costs	247,863.00	126,113.00	0.00	0.00	0.00	0.00	373,976.00
Environmental Costs	184,664.06	62,652.94	0.00	0.00	0.00	0.00	247,317.00
Design Costs	0.00	0.00	0.00	0.00	0.00	0.00	0.00
Right of Way Costs	0.00	0.00	0.00	0.00	0.00	0.00	0.00
Utility Costs	0.00	0.00	0.00	0.00	0.00	0.00	0.00
Construction Costs	0.00	12,860,343.00	50,560,461.00	36,058,690.00	9,757,785.00	10,909,727.90	120,147,006.90
Project Mgmt Costs	171,617.00	376,908.00	403,792.00	403,792.00	221,500.00	0.00	1,577,609.00
Public Involvement Costs	0.00	52,819.00	0.00	0.00	0.00	0.00	52,819.00
Construction Mgmt Costs	0.00	1,271,119.00	3,498,995.09	2,934,094.74	1,919,131.17	25,800.00	9,649,140.00
Total Project Cost	604,144.06	14,749,954.94	54,463,248.09	39,396,576.74	11,898,416.17	10,935,527.90	132,047,867.90
<b>US 281 Super Street:</b>							
Procurement Costs	0.00	0.00	0.00	0.00	0.00	0.00	0.00
Environmental Costs	0.00	0.00	0.00	0.00	0.00	0.00	0.00
Design Costs	519,446.00	0.00	0.00	0.00	0.00	0.00	519,446.00
Right of Way Costs	0.00	0.00	0.00	0.00	0.00	0.00	0.00
Utility Costs	0.00	0.00	0.00	0.00	0.00	0.00	0.00
Construction Costs	0.00	5,585,459.82	0.00	0.00	0.00	0.00	5,585,459.82
Project Mgmt Costs	171,029.39	453,409.84	12,689.93	0.00	0.00	0.00	637,129.16
Public Involvement Costs	16,445.27	10,291.89	0.00	0.00	0.00	0.00	26,737.16
Construction Mgmt Costs	0.00	0.00	0.00	0.00	0.00	0.00	0.00
Total Project Cost	706,920.66	6,049,161.55	12,689.93	0.00	0.00	0.00	6,768,772.14
<b>Loop 1604 Super Street:</b>							
Procurement Costs	0.00	0.00	0.00	0.00	0.00	0.00	0.00
Environmental Costs	0.00	72,518.00	31,079.00	0.00	0.00	0.00	103,597.00
Design Costs	0.00	740,000.00	0.00	0.00	0.00	0.00	740,000.00
Right of Way Costs	0.00	0.00	0.00	0.00	0.00	0.00	0.00
Utility Costs	0.00	0.00	0.00	0.00	0.00	0.00	0.00
Construction Costs	0.00	0.00	80,508.00	0.00	0.00	0.00	80,508.00
Project Mgmt Costs	0.00	56,000.00	24,001.00	0.00	0.00	0.00	80,001.00
Public Involvement Costs	0.00	45,894.00	0.00	0.00	0.00	0.00	45,894.00
Construction Mgmt Costs	0.00	0.00	0.00	0.00	0.00	0.00	0.00
Total Project Cost	0.00	914,412.00	135,588.00	0.00	0.00	0.00	1,050,000.00

**Alamo Regional Mobility Authority**

**Capital Projects Budget**

**Fiscal Years 2009 through 2014**

	Fiscal Year 2009	Fiscal Year 2010	Fiscal Year 2011	Fiscal Year 2012	Fiscal Year 2013	Fiscal Year 2014	Grand Total
<b>US 281 Project:</b>							
Procurement Costs	0.00	0.00	0.00	0.00	0.00	0.00	0.00
Environmental Costs	0.00	0.00	0.00	0.00	0.00	0.00	0.00
Design Costs	0.00	0.00	0.00	0.00	0.00	0.00	0.00
Right of Way Costs	0.00	0.00	0.00	0.00	0.00	0.00	0.00
Utility Costs	0.00	0.00	0.00	0.00	0.00	0.00	0.00
Construction Costs	0.00	0.00	0.00	0.00	0.00	0.00	0.00
Project Mgmt Costs	421,710.75	230,536.20	156,903.05	179,863.61	319,834.46	0.00	1,308,848.07
Public Involvement Costs	0.00	0.00	0.00	0.00	0.00	0.00	0.00
Construction Mgmt Costs	0.00	0.00	0.00	0.00	0.00	0.00	0.00
Total Project Cost	421,710.75	230,536.20	156,903.05	179,863.61	319,834.46	0.00	1,308,848.07
<b>Loop 1604 Project:</b>							
Procurement Costs	0.00	0.00	0.00	0.00	0.00	0.00	0.00
Environmental Costs	0.00	0.00	0.00	0.00	0.00	0.00	0.00
Design Costs	0.00	0.00	0.00	0.00	0.00	0.00	0.00
Right of Way Costs	0.00	0.00	0.00	0.00	0.00	0.00	0.00
Utility Costs	0.00	0.00	0.00	0.00	0.00	0.00	0.00
Construction Costs	0.00	0.00	0.00	0.00	0.00	0.00	0.00
Project Mgmt Costs	121,348.75	195,548.45	200,986.88	194,051.04	349,307.25	0.00	1,061,242.37
Public Involvement Costs	0.00	0.00	0.00	0.00	0.00	0.00	0.00
Construction Mgmt Costs	0.00	0.00	0.00	0.00	0.00	0.00	0.00
Total Project Cost	121,348.75	195,548.45	200,986.88	194,051.04	349,307.25	0.00	1,061,242.37
<b>General Project Research and Analysis:</b>							
Procurement Costs	0.00	0.00	0.00	0.00	0.00	0.00	0.00
Environmental Costs	0.00	0.00	0.00	0.00	0.00	0.00	0.00
Design Costs	0.00	0.00	0.00	0.00	0.00	0.00	0.00
Right of Way Costs	0.00	0.00	0.00	0.00	0.00	0.00	0.00
Utility Costs	0.00	0.00	0.00	0.00	0.00	0.00	0.00
Construction Costs	0.00	0.00	0.00	0.00	0.00	0.00	0.00
Project Mgmt Costs	0.00	379,808.00	301,955.48	226,103.44	413,686.06	0.00	1,321,552.98
Public Involvement Costs	0.00	0.00	0.00	0.00	0.00	0.00	0.00
Construction Mgmt Costs	0.00	0.00	0.00	0.00	0.00	0.00	0.00
Total Project Cost	0.00	379,808.00	301,955.48	226,103.44	413,686.06	0.00	1,321,552.98
Grand Total All Projects	4,311,148.07	31,983,076.39	60,097,722.59	43,021,882.01	13,516,314.61	10,935,527.90	163,865,671.57



**ALAMO RMA**  
*Alamo Regional Mobility Authority*  
*"Moving people faster"*

**Board Memorandum**

**To: Alamo RMA Board of Directors**

**From: Terry M. Brechtel, Executive Director** (TMB)

**Copies: File**

**Date: Friday, September 3, 2010**

**Agenda Item 4: Discussion and appropriate action on a resolution authorizing maintaining the current Texas County & District Retirement System plan provisions with no change for members in plan year 2011**

This action will maintain the current plan's provisions and benefit levels. The actuarial rate of 11.04% for calendar year 2011 (compared to 10.65% for calendar year 2010), as calculated by TCDRS annually, is required to maintain TCDRS plan provisions.

Staff recommends approval of this resolution.

*BOARD OF DIRECTORS*

*DR. WILLIAM E. THORNTON*  
*CHAIRMAN*

*ROBERT S. THOMPSON*  
*VICE-CHAIR*

*REYNALDO L. DIAZ, JR.*  
*SECRETARY/TREASURER*

*ARTHUR J. DOWNEY, JR*

*JAMES R. REED*

*ROBERT G. RODRIGUEZ*

*CHRISTEL VILLARREAL*

*TERRY M. BRECHTEL*  
*EXECUTIVE DIRECTOR*

**Page Intentionally Blank**

**GENERAL MEETING OF THE BOARD OF DIRECTORS  
OF THE  
ALAMO REGIONAL MOBILITY AUTHORITY**

**RESOLUTION NO. 10-31**

WHEREAS, the Alamo Regional Mobility Authority (“Alamo RMA”) was created pursuant to the request of Bexar County and in accordance with provisions of the Transportation Code and the petition and approval process established in 43 TEX. ADMIN. CODE § 26.01, *et. seq.* (the “RMA Rules”); and

WHEREAS, the Board of Directors of the Alamo RMA has been constituted in accordance with the Transportation Code and the RMA Rules; and

WHEREAS, the Texas legislature has established the Texas County and District Retirement System (“TCDRS”) pursuant to Section 67 of Article XVI of the Texas Constitution; and

WHEREAS, on October 27, 2004, the Board of Directors passed a resolution authorizing participation in TCDRS for the provision of retirement benefits to Alamo RMA employees and directed the Alamo RMA to develop a retirement plan with TCDRS to be consistent with the Bexar County employees’ plan and to include particular provisions as set forth by the Board; and

WHEREAS, pursuant to Resolution 08-24, the Board of Directors approved changes to the retirement plan with TCDRS to maintain the current TCDRS retirement plan for the 2009 plan year with one change in plan provisions from eight years of service to five years of service for retirement eligibility at the age of 60, an election made available by the state of Texas in 2009; and

WHEREAS, pursuant to Resolution No. 09-29, the Board of Directors approved the TCDRS retirement plan with no change in plan provisions for the 2010 plan year; and

WHEREAS, the Board of Directors desires to maintain the current TCDRS retirement plan with no change in plan provisions for the 2011 plan year.

NOW THEREFORE, BE IT RESOLVED, that the Alamo RMA Board of Directors hereby approves continued participation in TCDRS for the provision of benefits to Alamo RMA employees with no changes in plan provisions for the 2011 plan year; and

BE IT FURTHER RESOLVED that the Executive Director is authorized to take such actions as are necessary to evidence the Alamo RMA’s continued participation in the TCDRS plan.

Adopted by the Board of Directors of the Alamo Regional Mobility Authority on the 9<sup>th</sup> day of September, 2010.

Submitted and reviewed by:

Approved:

---

Terry M. Brechtel  
Executive Director for the  
Alamo Regional Mobility Authority

---

William E. Thornton  
Chairman, Board of Directors  
Resolution Number 10-31  
Date Passed 09/09/10

**Alamo Regional Mobility Authority, #721**  
**Authorization to maintain TCDRS plan provisions**  
**Plan year 2011**

With respect to the participation of Alamo Regional Mobility Authority in the Texas County & District Retirement System (TCDRS) for the 2011 plan year, the following order was adopted:

1. Alamo Regional Mobility Authority makes no change in the plan provisions for non-retirees.
- \* 2. With respect to benefit payments being paid to retirees or their beneficiaries, Alamo Regional Mobility Authority (**check one box**):
  - does not adopt a cost-of-living adjustment (COLA).
  - adopts a \_\_\_\_% CPI-based COLA.
  - adopts a \_\_\_\_% flat-rate COLA.
- \* 3. The required employer contribution rate for Plan Year 2011 will be the following:

(a) Required rate without COLA:	11.04%
(b) COLA rate:	+ <u>0</u> (enter 0 if not adopting a COLA)
(c) <b>Total required rate</b> (a + b):	= <u>11.04</u>
- \* 4. Employers may elect to pay a rate greater than the **total required rate** listed above. Alamo Regional Mobility Authority adopts for Plan Year 2011 (**check one box**):
  - the **total required rate** listed above.
  - add a new elected rate of \_\_\_\_\_%.
5. In the event the 2011 total required rate as set out above exceeds 11%, and if a current waiver of that limit is not on file with TCDRS, the Governing Board of Alamo Regional Mobility Authority hereby waives the 11% limit on the rate of employer contributions and such waiver will remain effective with respect to future plan years until properly revoked by official action.

**Certification**

I certify that the foregoing authorization concerning the participation of Alamo Regional Mobility Authority in TCDRS for Plan Year 2011 truly and accurately reflects the official action taken during a properly posted and noticed meeting on \_\_\_\_\_, 2010, by the Governing Board of Alamo Regional Mobility Authority as such action is recorded in the official minutes.

\_\_\_\_\_  
Presiding Officer of Alamo Regional Mobility Authority

Dated: \_\_\_\_\_

*\* Please fill in the required information for items 2, 3 and 4 before signing and sending this document to TCDRS.*

RETIREMENT PLAN ASSESSMENT  
FOR PLAN YEAR 2011

*Alamo Regional Mobility Authority – 721*

**Alamo Regional Mobility Authority, #721**  
**Retirement plan assessment**  
**for plan year 2011**

It's that time of year again — time to look at your TCDRS retirement plan and decide whether or not your benefits are adequate and affordable. This plan assessment will give you an overview of the benefits you currently provide. It also includes estimates on how much it will cost to provide these benefits in 2011.

If you are interested in adding to or changing your plan provisions for 2011, please contact your TCDRS Employer Services Representative. We will send you cost and benefit information on any changes you are considering. If you are satisfied with your current plan, please return the enclosed authorization by Dec. 15, 2010.

If you have questions, contact your TCDRS Employer Services Representative at 800-651-3848.

**NEXT STEPS**

1. If you are not considering any plan changes ...  
*return the enclosed authorization by Dec. 15, 2010.*
2. If you are only adopting a COLA or elected rate ...  
*return the enclosed authorization by Dec. 15, 2010.*
3. If you are considering changing or adding other plan provisions ...  
*contact TCDRS at 800-651-3848. We will be happy to send you the rates and authorization for the plan changes you are considering.*

**KEY DATES**

**Oct. 01, 2010**

Deadline to contact TCDRS in writing if you are considering authorizing a buyback.

**Dec. 15, 2010**

Send in your authorization to TCDRS confirming your 2011 plan provisions.

## YOUR BENEFITS

### Basic Benefit Provisions:

*Employee deposit rate — 7%*

*Matching rate — 200%*

*Prior service credit — 150%*

### Retirement Eligibility:

*Age 60 with 5 years of service*

*Any age with 20 years of service*

*Rule of 75 (age plus years of service equals 75)*

### Cost-of-Living Adjustments (COLAs) for retirees:

*You have never adopted a COLA.*

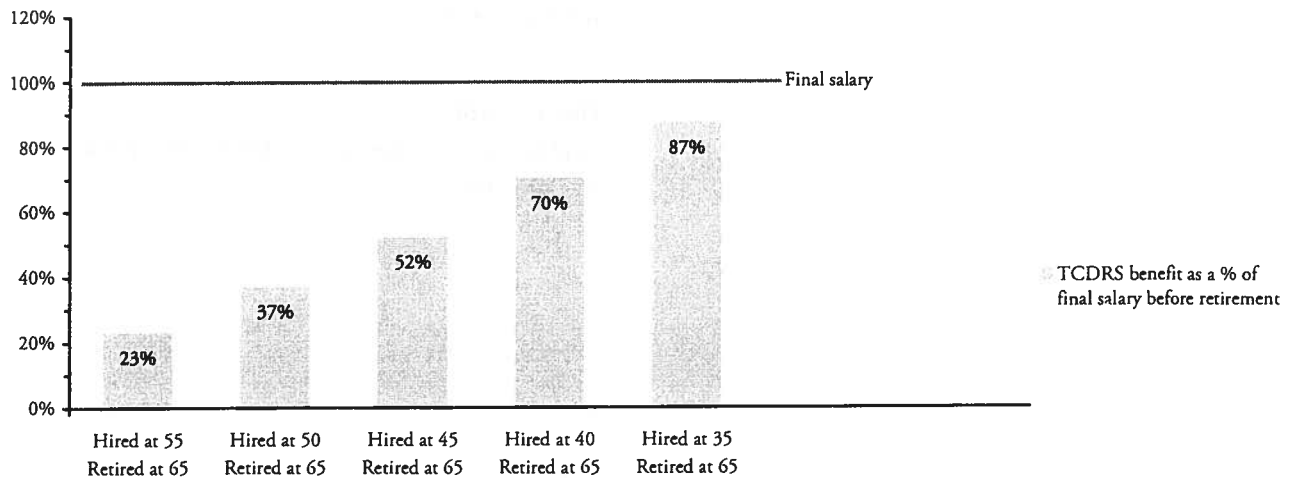
### Optional Benefit Provisions:

- *Partial lump-sum payment* – This allows an employee to withdraw part of his or her TCDRS account balance as a lump sum at retirement.

## WHAT YOU ARE PROVIDING

Under your plan, each employee makes deposits into his or her personal TCDRS account by paying in a percentage of each paycheck. Employee accounts earn 7% interest each year, which is compounded annually based on the account balance at the beginning of the year. If one of your employees chooses to receive a retirement benefit, TCDRS adds the employee's personal account balance to matching and other credits you provide as an employer. We then convert that sum into a monthly benefit payment, payable for life.

The following chart shows the estimated TCDRS benefit as a percentage of final salary prior to retirement for a new hire:



### Assumptions

- Employees are new hires and will work for you until retirement.
- Your current plan provisions will remain in effect through employee's retirement.
- Current laws governing TCDRS will continue as they are.
- Graded salary scales give bigger raises early in careers, with smaller raises later in careers (see Summary Valuation Report at [www.tcdrs.org](http://www.tcdrs.org)).
- Based on Life Only benefit.

## YOUR COSTS

Your employer contribution rate represents the percentage of payroll your organization needs to contribute to fund future benefits for your current employees, former employees and retirees.

To calculate your total required rate, add the rate for any COLA you plan to adopt to the provided calculated contribution rate.

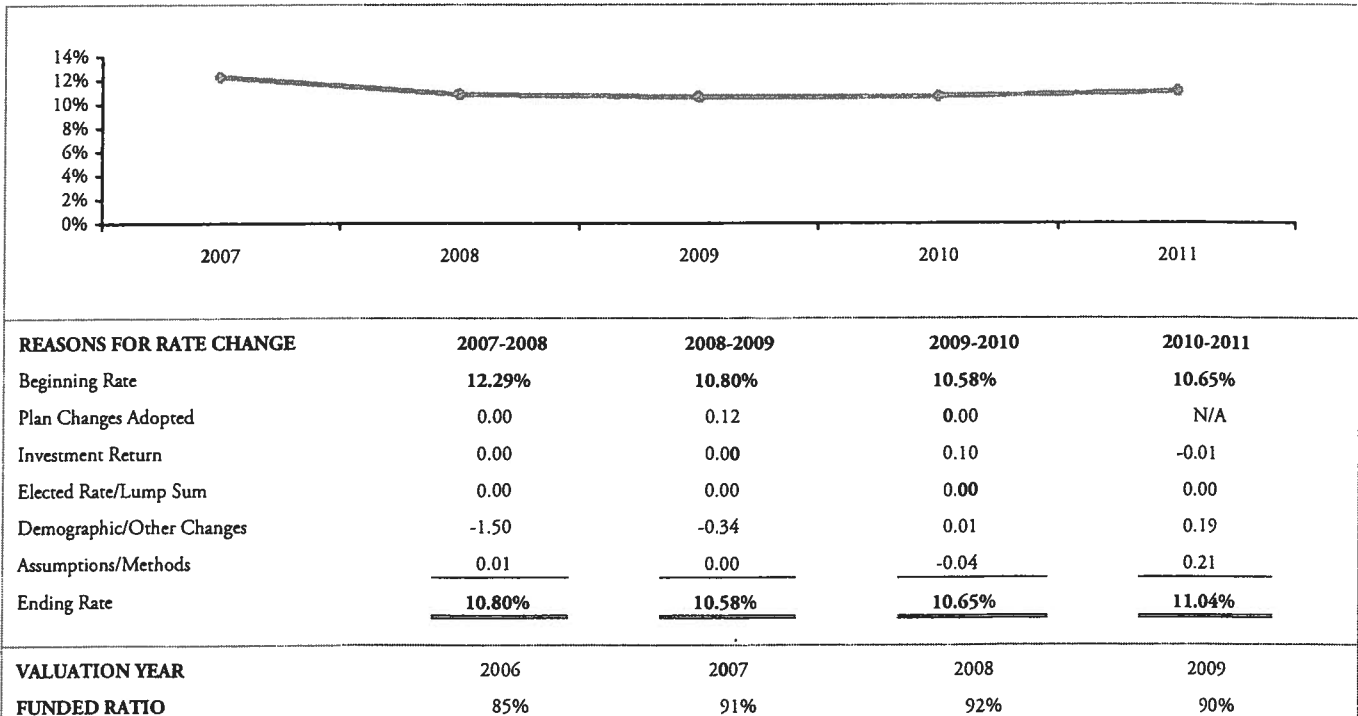
Your normal cost rate		10.35%
Your UAAL rate	+	0.69%
Calculated contribution rate		11.04%
COLA rate (if adopting)	+	
Total Required Rate		

To determine the cost of your plan in dollars, move the decimal for your "Total required rate" two places to the left, then multiply it by your estimated payroll for next year.

COLAs must be re-authorized each year. They are not "automatic." If you wish to authorize a COLA for the next plan year, you can estimate the cost based on the schedule of rates below:

10%	0.01		
20%	0.01		
30%	0.02		
40%	0.03		
50%	0.03		
60%	0.04		
70%	0.04		
80%	0.05		
90%	0.06		
100%	0.06		
		1%	0.00
		2%	0.01
		3%	0.01
	%	%	%
	of payroll		of payroll

Below is a record of your required employer contribution rate history over the last five years.



A complete Summary Valuation Report for the Dec. 31, 2009 valuation is available on the web.

**Page Intentionally Blank**



**ALAMO RMA**  
*Alamo Regional Mobility Authority*  
"Moving people faster"

**Board Memorandum**

**To: Alamo RMA Board of Directors**  
**From: Terry M. Brechtel, Executive Director**  
**Copies: File**  
**Date: Friday, September 3, 2010**

*TMB*

**Agenda Item 5: Discussion and appropriate action on a resolution approving a change order for the U.S. 281 Super Street Project**

Pursuant to Resolution No. 10- 10 the Board of Directors approved the execution of a contract with Ballenger Construction Company for the construction of the U.S. 281 Super Street Project. Subsequently, pursuant to Resolution No. 10-29, the Board of Directors approved the change order policy that change orders relating to construction and maintenance contracts that exceed the lesser of \$150,000 or thirty percent (30%) of the original contract amount will be presented to the Board of Directors for approval.

The staff of the Alamo RMA has received a request from TxDOT to approve a change order that will be funded by TxDOT from its maintenance funds in the amount of \$207,553.40 to repair pavement failures at Evans, Stone Oak, and Marshall roads.

This resolution will approve the letter agreement with TxDOT and the change order.

Staff recommends approval of this resolution.

*BOARD OF DIRECTORS*

*DR. WILLIAM E. THORNTON*  
CHAIRMAN

*ROBERT S. THOMPSON*  
VICE-CHAIR

*REYNALDO L. DIAZ, JR.*  
SECRETARY/TREASURER

*ARTHUR J. DOWNEY, JR*

*JAMES R. REED*

*ROBERT G. RODRIGUEZ*

*CHRISTEL VILLARREAL*

*TERRY M. BRECHTEL*  
EXECUTIVE DIRECTOR

**Page Intentionally Blank**

**GENERAL MEETING OF THE BOARD OF DIRECTORS  
OF THE  
ALAMO REGIONAL MOBILITY AUTHORITY**

**RESOLUTION NO. 10-32**

WHEREAS, the Alamo Regional Mobility Authority ("Alamo RMA") was created pursuant to the request of Bexar County and in accordance with provisions of the Transportation Code and the petition and approval process established in 43 Tex. Admin. Code § 26.01, *et. seq.* (the "RMA Rules"); and

WHEREAS, the Board of Directors of the Alamo RMA has been constituted in accordance with the Transportation Code and the RMA Rules; and

WHEREAS, the Alamo RMA is charged with improving mobility throughout Bexar County and the San Antonio region; and

WHEREAS, on January 14, 2009 pursuant to Resolution No. 09-04, the Alamo RMA Board of Directors authorized the submission of various proposed projects for consideration under the federal economic stimulus program, the American Recovery and Reinvestment Act of 2009 (the "Federal Stimulus Funds"), including the proposed "Super Street" project on U.S. 281 North (the "U.S. 281 Super Street Project"); and

WHEREAS, in connection with the development and construction of the U.S. 281 Super Street Project, in addition to the Federal Stimulus Funds, the City of San Antonio (the "City"), and the Advanced Transportation District (the "ATD") will also serve as sources of funding; and

WHEREAS, pursuant to Minute Order 111817, the Texas Transportation Commission authorized the Alamo RMA to construct improvements to the state highway system in connection with the U.S. 281 Super Street Project and authorized the execution of a project development agreement with the Alamo RMA for such improvements; and

WHEREAS, pursuant to Resolution No. 09-31, dated October 8, 2009, the Alamo RMA Board of Directors approved an Advance Funding Agreement and a Memorandum of Understanding with TxDOT to provide funds for the development and construction of the U.S. 281 Super Street Project and the monitoring of the performance results from the U.S. 281 Super Street Project; and

WHEREAS, pursuant to Resolution No. 10-10, the Board of Directors of the Alamo RMA approved the selection of Ballenger Construction Company as the lowest responsible best bidder for the construction of the U.S. 281 Super Street Project and the execution of the contract for the construction of the U.S. 281 Super Street Project; and

WHEREAS, pursuant to Resolution No. 10-29, the Board of Directors approved the change order policy that change orders relating to construction and maintenance contracts that exceed the lesser of \$150,000 or thirty percent (30%) of the original contract amount will be presented to the Board of Directors for approval; and

WHEREAS, TxDOT has requested that certain additional improvements in an amount in excess of \$150,000 be included as part of the U.S. 281 Super Street Project pursuant to a change order to be paid by TxDOT, in the form or substantially the same form attached hereto as Attachment "A"; and

WHEREAS, TxDOT's commitment to provide funds for the additional improvements as set forth in the change order are set forth in the letter agreement, in the form or substantially the same form attached hereto as Attachment "B"; and

NOW THEREFORE, BE IT RESOLVED, that the Executive Director is directed to approve the letter agreement for the change order for the U.S 281 Super Street Project in the form or substantially the same form attached hereto as Attachment "B".

BE IT FURTHER RESOLVED, that the Executive Director is directed to execute the change order for the contract for the construction of the U.S 281 Super Street Project in the form or substantially the same form attached hereto as Attachment "A".

Adopted by the Board of Directors of the Alamo Regional Mobility Authority on the 9th day of September, 2010.

Submitted and reviewed by:

Approved:

---

Terry M. Brechtel  
Executive Director for the Alamo  
Regional Mobility Authority

---

William E. Thornton  
Chairman, Board of Directors  
Resolution Number 10-32  
Date Passed 09/09/10

**ATTACHMENT "A"**

CONTRACT ID: 253-04-140  
PROJECT: STP 2009(484)ES  
CONTRACT:  
AWARD AMOUNT: \$6,938,494.84

HIGHWAY: US 281  
DISTRICT: 15  
COUNTY: Bexar  
AREA ENGR: Alamo RMA

Functions:  
 Extra Work Force Account  
Zero Dollar Final Quantity  
Overrun/Underrun Change Project Limits  
Time Adjustment Delete/Add CSJ

CONTRACTOR: Ballenger Construction Co

CO AMOUNT: \$207,553.40  
CO TYPE: Extra Work

DESCRIPTION:  
REASON:

3RD PARTY AMNT:  
APPRV LEVEL:

SECONDARY REASON(S):

**DESCRIBE THE REASON FOR THE CHANGE ORDER AND WHAT IS BEING CHANGED. WHEN NECESSARY, INCLUDE EXCEPTIONS TO THIS AGREEMENT:**

Repair pavement failures at Evans Rd. , Stone Oak Blvd, and Marshall Rd as shown on attached plan sheets. Unique items 9341-2011 and 9502-2001 shall be constructed in accordance with Standard Specification items 341 and 502 respectively. Unique item 9606-2053 will provide compensation for off duty police officers based on approved documentation provided to the ARMA.  
Additional time may be granted for this work upon receipt of a time impact analysis provided by the contractor. The time impact analysis may be done after the work is complete in order to process the CO and allow the contractor to start the work.

"By signing this change order, the contractor agrees to waive any and all claims for additional compensation due to any and all other expenses; additional changes for time, overhead and profit; or loss of compensation as a result of this change and that this agreement is made in accordance Item 4 and the Contract. Exceptions should be noted in explanation above."

**THE CONTRACTOR**

BY: \_\_\_\_\_  
DATE

TYPED/PRINTED NAME: \_\_\_\_\_

TYPED/PRINTED TITLE \_\_\_\_\_

ALAMO RMA PROJECT ENGR \_\_\_\_\_  
DATE

ALAMO RMA PROJECT ENGINEER'S SEAL

ALAMO RMA DIRECTOR of OPERATIONS

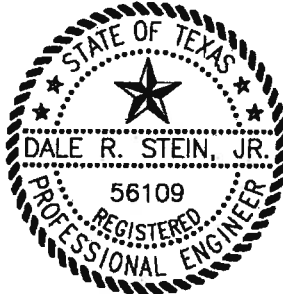
\_\_\_\_\_ DATE

TxDOT Area Engineer

\_\_\_\_\_ DATE

TxDOT District Engineer

\_\_\_\_\_ DATE



CONTRACT ID 253-04-140  
 CONTRACT ITEMS  
 PROJECT NBR STP 2009(484)ES

CHANGE ORDER NBR. 4

Page 2 of 2

CAT NBR	LINE ITEM	ITEM CODE	SP NBR	DESCRIPTION	UNIT	UNIT PRICE	ORIG + PREV REV QTY	QTY THIS CO	NEW QTY	AMOUNT THIS CO
	9341-2011			D - GR HMA (QC QA) TY - B PG64 - 22	TON	\$53.50	0	1987	1987	\$106,304.50
	354 - 2082			PLANE ASPH CONC PAV (10")	SY	\$19.78	0.00	3612.30	3612.30	\$71,451.29
	9502-2001			BARRICADES, SIGNS AND TRAFFIC HANDLING (CO #4)	EA	\$2,823.77	0.00	6.00	6.00	\$16,942.62
	9606-2053			OFF-DUTY UNIFORM POLICE OFFICERS (CO #4)	EA	\$1.00	0.00	10,800.00	10,800.00	\$10,800.00
									BOND 1%	\$2,054.98
									<b>TOTAL CO AMOUNT</b>	<b>\$207,553.40</b>

**Page Intentionally Blank**

**ATTACHMENT "B"**



# Texas Department of Transportation

P.O. BOX 29928 • SAN ANTONIO, TEXAS 78229-0928 • (210) 615-1110

August 31, 2010

Alamo Regional Mobility Authority  
1222 N. Main Avenue, Ste 1000  
San Antonio, Texas 78212  
Attn: Terry Brechtel  
ARMA Executive Director

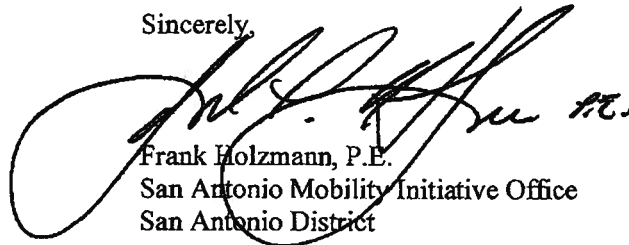
Subject: US 281 Superstreet Change Order #4  
Flexible Pavement Repair

Dear Ms. Brechtel,

TxDOT will provide funds to compensate the contractor for the additional work to repair pavement failures on the US 281 Superstreet project as described in the Change Order #4 documents. TxDOT will use Category 1 funds and any remaining unused or unspent ARRA funds dedicated to the project to complete this work. The agreed upon Change Order amount between TxDOT and ARMA is \$207,553.40.

If you have questions please contact me at (210) 403-4300

Sincerely,



Frank Holzmann, P.E.  
San Antonio Mobility Initiative Office  
San Antonio District

CC: Pat Irwin, P.E. ARMA Director of Engineering Operations  
Mario Medina P.E. TxDOT San Antonio District Engineer  
Julia Brown, P.E. TxDOT San Antonio Deputy District Engineer  
Clay Smith, P.E. TxDOT Director of TP&D  
Jessica Castiglione, P.E. TxDOT Project Engineer



**ALAMO RMA**  
Alamo Regional Mobility Authority  
"Moving people faster"

**Board Memorandum**

**To: Alamo RMA Board of Directors**

**From: Terry M. Brechtel, Executive Director**

*TMB*

**Copies: File**

**Date: Friday, September 3, 2010**

**Agenda Item 6: Discussion and appropriate action on the financial statements for the period ending August 31, 2010**

Carrie Conner, Comptroller for the Alamo RMA, will present the monthly financial statements for the period ending August 31, 2010.

Staff recommends acceptance of the financial statements to be recorded in the minutes of the meeting.

*BOARD OF DIRECTORS*

*DR. WILLIAM E. THORNTON*  
*CHAIRMAN*

*ROBERT S. THOMPSON*  
*VICE-CHAIR*

*REYNALDO L. DIAZ, JR.*  
*SECRETARY/TREASURER*

*ARTHUR J. DOWNEY, JR*

*JAMES R. REED*

*ROBERT G. RODRIGUEZ*

*CHRISTEL VILLARREAL*

*TERRY M. BRECHTEL*  
*EXECUTIVE DIRECTOR*



# Faint Title Text

Faint subtitle or header text

Faint paragraph of text, possibly a preface or introduction

Faint paragraph of text

Faint paragraph of text

**Page Intentionally Blank**

Faint paragraph of text

Faint text in the right margin, possibly a table of contents or index

**ALAMO REGIONAL MOBILITY AUTHORITY**  
**FINANCIAL STATEMENTS**  
**August 31, 2010**

**Board of Directors Reports**

# ALAMO REGIONAL MOBILITY AUTHORITY

## Balance Sheet

August 31, 2010

### ASSETS

Current Assets:	
Cash and cash investments	9,529,184
Total Current Assets	9,529,184
Noncurrent Assets:	
Capitalized cost (see Statement of Capitalized Costs by Project)	22,891,745
Total Noncurrent Assets	22,891,745
Other Assets:	
Prepaid Expense	5,356
Security Deposit	8,023
Total Other Assets	13,379
Total Assets	32,434,307

### LIABILITIES AND FUND EQUITY

Current Liabilities:	
Accrued Expense	5,562,080
Accrued Paid Leave	223
Accrued Vacation Time	49,368
Total Current Liabilities	5,611,672
Other Liabilities:	
Bexar County Loan #1 Payable	250,000
Bexar County Loan #2 Payable	500,000
City of San Antonio Loan #1 Payable	500,000
TxDOT Financial Assistance Agreement #1	913,890
TxDOT Financial Assistance Agreement #2	4,542,185
TxDOT Financial Assistance Agreement #3	3,043,925
TxDOT Financial Assistance Agreement #5	8,260,000
Deferred Revenue TxDOT ArmaGrant2	6,282,945
Deferred Revenue Local Transportation Project	
Advance Funding Agreement - US281 Superstreet	471,412
Deferred Revenue Bexar County - Loop 1604 Superstreet Fund I	-
Deferred Revenue Bexar County - Loop 1604 Superstreet Fund II	74,996
Accrued Interest	211,421
Total Other Liabilities	25,050,774
Total Liabilities	30,662,446
Fund Deficit:	
Retained Deficit	(7,601,061)
Unreserved - Net Income/(Loss)	9,372,921
Total Fund Deficit	1,771,860
Total Liabilities and Fund Deficit	32,434,307

These financial statements are unaudited and for management's use only.

**ALAMO**  
**REGIONAL MOBILITY AUTHORITY**  
**Statement of Capitalized Cost by Project**  
August 31, 2010

	<b>FISCAL YEAR THROUGH August 31, 2010</b>	<b>CUMULATIVE TOTAL THROUGH August 31, 2010</b>
<b><u>US281N TOLL PROJECT</u></b>		
General Engineering Services	31,953	634,922
Environmental Impact Statement Services	3,309,139	3,992,388
Legal Counsel	22,187	143,750
Rating Agency	-	66,000
Project Development Advisor	-	3,269
Biological Assessment Team	-	30,991
Meeting Facilitators	-	4,655
Legal/Public Notices/Other	8,224	9,616
Financial Advisor	-	34,942
<b>TOTAL CAPITALIZED COST - US281N</b>	<b>3,371,503</b>	<b>4,920,534</b>
<b><u>LOOP 1604 TOLL PROJECT</u></b>		
General Engineering Services	26,420	86,458
Environmental Impact Statement Services	4,412,541	5,432,863
Legal Counsel	9,400	50,415
Rating Agency	-	-
Project Development Advisor	-	2,194
Biological Assessment Team	-	30,991
Meeting Facilitators	-	4,655
Legal/Public Notices/Other	17,148	19,703
<b>TOTAL CAPITALIZED COST - LOOP 1604</b>	<b>4,465,509</b>	<b>5,627,279</b>
<b><u>US281 INTERCHANGE PROJECT</u></b>		
Construction	6,435,665	6,435,665
General Engineering Services	933,822	1,165,397
Environmental Impact Statement Services	-	-
Legal Counsel	49,565	107,444
Rating Agency	-	-
Project Development Advisor	-	1,325
Biological Assessment Team	-	-
Meeting Facilitators	-	-
Legal/Public Notices/Other	4,852	13,578
<b>TOTAL CAPITALIZED COST - US281 INTERCHANGE</b>	<b>7,423,904</b>	<b>7,723,409</b>
<b><u>US281N SUPERSTREET PROJECT</u></b>		
Construction	2,602,620	2,602,620
General Engineering Services	462,856	1,055,981
Environmental Impact Statement Services	-	-
Legal Counsel	2,156	6,400
Rating Agency	-	-
Project Development Advisor	-	-
Biological Assessment Team	-	-
Meeting Facilitators	-	-
Legal/Public Notices/Other	14,321	20,691
<b>TOTAL CAPITALIZED COST - US281N SUPERSTREET</b>	<b>3,081,953</b>	<b>3,685,692</b>

	<b>FISCAL YEAR THROUGH August 31, 2010</b>	<b>CUMULATIVE TOTAL THROUGH August 31, 2010</b>
<b><u>LOOP 1604 SUPERSTREET PROJECT</u></b>		
General Engineering Services	926,871	926,871
Environmental Impact Statement Services		-
Legal Counsel	294	294
Rating Agency		-
Project Development Advisor		-
Biological Assessment Team		-
Meeting Facilitators		-
Legal/Public Notices/Other	7,669	7,669
<b>TOTAL CAPITALIZED COST - LOOP 1604 SUPERSTREET</b>	<b><u>934,834</u></b>	<b><u>934,834</u></b>
<b>TOTAL CAPITALIZED COST</b>	<b><u>19,277,702</u></b>	<b><u>22,891,745</u></b>

These financial statements are unaudited and for management's use only.

**ALAMO**  
**REGIONAL MOBILITY AUTHORITY**  
Statement of Revenue, Expenses and Changes in Fund Deficit  
For the period ending August 31, 2010

	ACTUAL MONTH	ACTUAL FISCAL YEAR to date	ADOPTED BUDGET FISCAL YEAR to date	ACTUAL VS. BUDGET VARIANCE FISCAL YEAR to date
Operating Income				
Grant Revenue				
TxDOT ARMA Grant2	40,311	3,415,099	-	3,415,099
TxDOT ARRA US281N Super Street	535,042	2,052,564	-	2,052,564
TxDOT ARRA Loop 1604 Interchange	349,160	4,262,138	-	4,262,138
VIA US281N Super Street	78,714	448,282	-	448,282
Bexar County Loop 1604 Super Street Fund I	-	150,000	-	150,000
Bexar County Loop 1604 Super Street Fund II	225,004	525,004	-	525,004
Total Operating Income	1,228,231	10,853,087	-	10,853,087
Operating Expenses:				
Salary, Benefits and Retirement Expense	97,156	1,062,174	1,043,779	(18,395)
Payroll Tax Expense	5,813	66,598	60,984	(5,614)
Accrued Vacation	-	-	-	-
Travel/Conference & Staff Develop/Licensure	756	19,999	52,090	32,091
Insurance Expense	767	10,708	13,540	2,832
Website Maintenance	-	300	688	388
Telephone	1,109	10,981	18,425	7,444
Supplies	166	3,271	6,067	2,796
Printing	-	4,676	5,500	824
Postage	85	2,046	2,750	704
Equipment	963	31,680	32,131	451
Subscriptions	-	472	1,375	903
Office Space	8,023	87,653	91,985	4,332
Meeting Expense	218	3,127	4,913	1,786
Memberships	-	4,840	5,664	824
Professional Services	(1,487)	33,327	120,833	87,506
Advertising/Recruiting	-	1,577	3,208	1,631
Miscellaneous Expense	138	1,859	2,052	193
Total Operating Expenses	113,707	1,345,288	1,465,984	120,696
Equipment Purchases				
Capitalized Equipment Purchases	32,550	85,994	85,994	-
Non-Capitalized Equipment Purchases	-	14,977	34,089	19,112
Total Equipment Purchases	32,550	100,971	120,083	19,112
Operating Income/(Loss)	1,081,974	9,406,828	(1,586,067)	10,992,895
Non-Operating Income:				
Interest Income	178	975	-	975
Nonoperating Expenses:				
Interest Expense	3,171	34,881	34,879	(2)
Non-Operating Income/(Loss)	(2,993)	(33,906)	(34,879)	973
Net Income/(Loss)	1,078,984	9,372,921	(1,620,945)	10,993,866
Retained (deficit) at October 1, 2009		(7,601,061)		
Retained (deficit)/surplus at July 31, 2010		1,771,860		

**Note 1:** Professional Services for the month and fiscal year also include accruals for services provided, but not paid, and are as follows:

	August		Fiscal Year
	-		
JMP Consulting	1,300	JMP Consulting	1,300
Garza Gonzalez		Garza Gonzalez	15,600
Locke Lord	(2,787)	Locke Lord	16,427
	(1,487)		33,327

**ALAMO**  
**REGIONAL MOBILITY AUTHORITY**

**Statement of Cash Flow**

For the period ending August 31 2010

OPERATING ACTIVITIES:	
Income (Loss) from Operations	9,372,921
Adjustments to reconcile loss from operations to net cash used by operating activities:	
Increase (Decrease) in Deferred Revenue	2,811,615
Increase (Decrease) in Interest Payable	34,881
(Increase) Decrease in Prepaid Expense	(2,113)
Increase (Decrease) in Pension Withholding	223
Increase (Decrease) in Accounts Payable	(1,196,791)
Increase (Decrease) in Accrued Expense	5,562,080
Increase (Decrease) accrued paid leave	-
(Increase) Decrease in Security Deposits	-
Net cash provided by Operating Activities	<u>16,582,815</u>
CAPITAL FINANCING ACTIVITIES	
Purchase US281N Project Assets	(3,371,503)
Purchase Loop 1604 Project Assets	(4,465,510)
Purchase US281N Interchange Project Assets	(7,423,902)
Purchase US281N Super Street Project Assets	(3,081,953)
Purchase Loop 1604 Super Street Project Assets	(934,834)
Net cash used by Capital Financing Activities	<u>(19,277,702)</u>
NON-CAPITAL FINANCING ACTIVITIES:	
Proceeds TxDOT FAA #3	-
Proceeds TxDOT FAA #5	4,130,000
Net cash provided by Non-Capital Financing Activities	<u>4,130,000</u>
Net cash increase (decrease) for period	<u>1,435,114</u>
Net increase (decrease) in cash and cash investments	
Cash and Cash Investments, October 1, 2009	8,094,069
Cash and Cash Investments, August 31, 2010	9,529,184
Net cash increase (decrease) for period	<u>1,435,114</u>

These financial statements are unaudited and for management's use only.



**ALAMO RMA**  
Alamo Regional Mobility Authority  
"Moving people faster"

**Board Memorandum**

**To: Alamo RMA Board of Directors**

**From: Terry M. Brechtel, Executive Director** *TMB*

**Copies: File**

**Date: Friday, September 3, 2010**

**Agenda Item 7: Executive Director's Report**

The Executive Director's Report for this month will cover the following topics:

- A) Board Calendar and notification of upcoming events
- B) Status report of GEC Work Authorizations
- C) Monthly Update on the US 281 / Loop 1604 Interchange Project
- D) Monthly Update on the US 281 Super Street Project
- E) Monthly Update on the Loop 1604 Super Street Project
- F) Monthly Update on the US 281 Environmental Impact Statement process
- G) Monthly Update on the Loop 1604 Environmental Impact Statement process
- H) Legislative Update

This information is included in your packets for your review.

There is no action required of the Board on this item.

*BOARD OF DIRECTORS*

*DR. WILLIAM E. THORNTON*  
CHAIRMAN

*ROBERT S. THOMPSON*  
VICE-CHAIR

*REYNALDO L. DIAZ, JR.*  
SECRETARY/TREASURER

*ARTHUR J. DOWNEY, JR*

*JAMES R. REED*

*ROBERT G. RODRIGUEZ*

*CHRISTEL VILLARREAL*

*TERRY M. BRECHTEL*  
EXECUTIVE DIRECTOR

Page Intentionally Blank



ALAMO RMA

# September 2010 Alamo RMA Calendar

"MOVING PEOPLE TOGETHER"

SUN	MON	TUE	WED	THU	FRI	SAT
			1	2	3 L. Alloway presentation to Sunrise Rotary – 7 a.m. – Sonterra / 281	4
5 L. Alloway on KENS 5 Morning Show – 7:40 a.m.	6 Labor Day Holiday	7	8 Dr. Thornton speaking to Real Estate Council – 7:30 a.m. – Petroleum Club	9 Alamo RMA Board of Directors Meeting – 1 p.m. – AACOG	10 P. Irwin and D. Stein presentation to Professional Engineers in Government – 7:00 a.m. Tool Yard	11
12	13	14 Commissioner Meadows (TXDOT) in town for Alamo RMA project tour	15	16	17	18
19	20 RMA Planning Committee – RMA Offices – 3:30 p.m.	21 T. Brechtel presentation to Women in Transportation Seminar – San Antonio Chapter	22	23	24	25
26	27 MPO Transportation Policy Board Meeting – 1:30 p.m. VIA Metro Ctr	28	29	30		



ALAMO RMA

"Moving people faster."

# October 2010 Alamo RMA Calendar

SUN	MON	TUE	WED	THU	FRI	SAT
3	4 RMA Planning Committee Meeting – RMA Offices – 3:30 p.m.	5	6 Tent: US 281 EIS Community Advisory Committee Meeting – Location TBD – 6-8 p.m.	7	8	9
10	11 RMA Finance Committee Meeting – RMA Offices – 4:00 p.m.	12	13	14 Alamo RMA Board of Directors Meeting – 1:00 p.m. – AACOG Team Texas in San Antonio	15 Team Texas in San Antonio	16
17	18 RMA Planning Committee Meeting – RMA Offices – 3:30 p.m.	19	20	21	22	23
24	25	26	27	28	29	30
31						



ALAMO RMA  
RECYCLING AND WASTE MANAGEMENT DISTRICT

"Moving people faster!"

# November 2010 Alamo RMA Calendar

SUN	MON	TUE	WED	THU	FRI	SAT
	1 Alamo RMA Planning Committee Meeting - 3:30 p.m. Alamo RMA Offices	2 Election Day 2010	3	4 T. Brechtel on panel at National Association of Women in Construction - San Antonio Convention	5	6
7	8 Alamo RMA Finance Committee Meeting - 4:00 p.m. - Alamo RMA Offices	9	10	11 Veteran's Day Holiday - Alamo RMA Offices Closed / Board Meeting to be rescheduled	12	13
14	15 Alamo RMA Planning Committee Meeting - 3:30 p.m. - Alamo RMA Offices	16	17	18	19	20
21	22	23	24	25 Thanksgiving Holiday - Alamo RMA Offices Closed	26 Thanksgiving Holiday - Alamo RMA Offices Closed	27
28	29	30				



Alamo Regional Mobility Authority  
General Engineering Consultant Services

GEC TEAM WORK AUTHORIZATION STATUS - as of August 20, 2010

Work Auth. No.	REMARKS	BUDGET STATUS			
		Amounts under Commitment	Costs to be billed through 08/20/10*	BALANCE	% COMPLETE
<b>Project Management</b>					
1	General Engineering Services / Timeline	\$1,737,957	\$1,640,728	\$97,229	
3	General Engineering Services / Implementation Planning	\$23,943	\$23,943	\$0	100%
9.1	Project Management	\$24,508	\$24,508	\$0	100%
10	General Engineering Assistance	\$1,302,983	\$1,302,983	\$0	100%
19	Project Management	\$24,633	\$24,633	\$0	100%
		\$381,890	\$264,661	\$97,229	73%
		\$1,050,404	\$975,234	\$75,170	
<b>Public Involvement Program</b>					
2	Phase 1 - Public Surveys & Key Messages	\$69,982	\$69,982	\$0	100%
4	Phase 1A - Message Delivery & Media	\$292,160	\$292,160	\$0	100%
11	Phase 1B - Public Involvement & Outreach	\$281,366	\$281,366	\$0	100%
13	Public Involvement Services	\$153,418	\$153,415	\$3	100%
18	General Public Involvement Support	\$273,478	\$198,311	\$75,167	73%
		\$9,939,285	\$1,213,212	\$8,726,073	
<b>Loop 1604 Engineering Services</b>					
5	Initial CDA Evaluation	\$13,984	\$13,984	\$0	100%
21	Loop 1604 Engineering Services	\$110,832	\$59,867	\$59,865	46%
23	Loop 1604 Super Street	\$788,529	\$716,446	\$52,083	93%
		\$610,842	\$610,505	\$338	
<b>IH35 Project Development</b>					
6	Development of Work Plan and Schedule for IH35 Project	\$24,611	\$24,611	\$0	100%
9.5	IH 35 Toll Project - Phase 1	\$586,231	\$585,894	\$338	100%
		\$1,114,766	\$1,114,766	\$0	
<b>SH16 (Bandera Road) Project Development</b>					
7/7.1	Development of Work Plan and Schedule, Data Analysis	\$43,862	\$43,862	\$0	100%
9.2	SH 16 Toll Project - Phase 1	\$624,350	\$624,350	\$0	100%
9.6	SH 16 Toll Project - Phase 2	\$299,929	\$299,929	\$0	100%
12	Bandera Road Community Working Group Process	\$146,645	\$146,645	\$0	100%
		\$637,797	\$637,796	\$0	
<b>US281/Wurzbach Parkway Inter. Project Development</b>					
8/8.1	Development of Work Plan and Schedule for US281/WP Project	\$36,319	\$36,319	\$0	100%
9.3	Wurzbach Parkway	\$95,431	\$95,431	\$0	100%
9.3F	Wurzbach Parkway and Interchange Project	\$496,480	\$496,480	\$0	100%
9.4	Wurzbach Parkway Preliminary Cost Study	\$9,567	\$9,567	\$0	100%
		\$13,176,724	\$3,576,712	\$9,600,011	
<b>281 Engineering Services</b>					
14	281 Toll Project: Procurement, GEC report, technical support	\$1,289,419	\$1,289,419	\$0	100%
15	281 Toll Project: Toll Support/IT Systems	\$84,452	\$3,101	\$81,351	4%
16	281 Toll Project: ROW Acquisition Services	\$910,605	\$237,740	\$672,865	26%
20	281 Engineering and Environmental Support Services	\$670,894	\$598,630	\$82,264	88%
22	281 Super Street	\$634,443	\$801,827	\$32,616	96%
24	US 281/Loop 1604 Interchange	\$9,045,940	\$431,916	\$8,614,024	5%
25	281 Super Street CEI	\$280,971	\$174,081	\$116,890	60%
26	281 VISSIM Model	\$50,000	\$50,000	\$0	100%
		\$28,267,794	\$9,768,974.62	\$18,498,821	
	<b>Project Summary Status</b>				

\* Figures do not include outstanding subconsultant invoices

**Alamo Regional Mobility Authority  
General Engineering Consultant Services  
DBE and Local Effort Distribution (through 08/20/10)**

Total GEC Expenditures (through 08/20/10)		\$	9,337,057
Total Subconsultant Expenditures (through 08/20/10)	38%	\$	3,580,720
DBE Expenditures (through 08/20/10)	17%	\$	1,616,166
Local Effort Expenditures (through 08/20/10)	94%	\$	8,764,579

**SUPPORTING INFORMATION**

**DBE Effort Distribution (through 08/20/10)**

	Contracted	Invoiced	% of Total Costs	% of Sub Work
Arias and Associates	\$ 71,181	\$ 71,179	0.76%	1.99%
Foster	\$ 502,126	\$ 16,560	0.18%	0.46%
Guerra DeBerry Coody	\$ 95,204	\$ 95,197	1.02%	2.66%
Kelly Morris Public Relations	\$ 36,655	\$ 10,561	0.11%	0.29%
Poznecki-Camarillo & Associates	\$ 392,125	\$ 362,420	3.88%	10.12%
RJ Rivera & Associates	\$ 582,052	\$ 578,243	6.19%	16.15%
Rodriguez Transportation Group	\$ 261,734	\$ 220,204	2.36%	6.15%
Vickrey & Associates	\$ 238,306	\$ 236,169	2.53%	6.60%
Miscellaneous Vendors	\$ 52,315	\$ 25,634	0.27%	0.72%
Total	\$ 2,231,697	\$ 1,616,166	17.31%	45.14%

**Non-DBE Effort Distribution (through 08/20/10)**

	Contracted	Invoiced	% of Total Costs	% of Sub Work
Baselice	\$ 28,000	\$ 28,000	0.30%	0.78%
Civil Engineering Consultants	\$ 382,884	\$ 268,687	2.88%	7.50%
Crossland Acquisition	\$ 803,706	\$ 176,380	1.89%	4.93%
Davidson and Troilo, PC	\$ 10,769	\$ 841	0.01%	0.02%
Pape-Dawson	\$ 1,254,790	\$ 1,221,423	13.08%	34.11%
SWCA	\$ 63,146	\$ 63,146	0.68%	1.76%
Taylor West	\$ 109,441	\$ 109,415	1.17%	3.06%
Wilbur Smith Associates	\$ 54,516	\$ 54,516	0.58%	1.52%
eBuilder	\$ 116,293	\$ 42,147	0.45%	1.18%
Total	\$ 2,823,545	\$ 1,964,554	21.04%	54.86%

**Local Effort Distribution (through 08/20/10)**

	Local	Non-local	Total	% Local
HNTB	\$ 5,317,151	\$ 439,186	\$ 5,756,337	92.37%
Subconsultants	\$ 3,447,428	\$ 133,292	\$ 3,580,720	96.28%
Total	\$ 8,764,579	\$ 572,478	\$ 9,337,057	93.87%



# GEC ACTIVITIES REPORT

## August 2010

---

---

The GEC efforts this month focused on construction and engineering oversight, technical support, and environmental tasks on:

- Construction inspection for US 281 Superstreet Project,
  - Environmental studies and final design for Loop 1604 Superstreet Project
  - Design oversight for US 281/Loop 1604 Interchange Project,
- 
- 

Following are summaries of the GEC activities on these projects during the month of August 2010:

### **US 281 Superstreet**

Construction oversight and inspection services have continued on the US 281 Superstreet Project. The construction activity continues to progress on schedule. The contractor has continued operations for placement of electrical conduit, the installation of traffic poles, and begun the widening of the u-turn areas. Other activity, including installation of signal and sign foundations, continues. The GEC also provided traffic signal timing plan and performance monitoring services.

### **Loop 1604 Superstreet**

#### *Design*

Design activities are nearing completion for the Loop 1604 Superstreet improvements. The design plans are currently under review by the TxDOT Design Division and should be ready for letting in September.

#### *Environmental*

Environmental activities include the preparation of two Categorical Exclusion (CE) documents. For the 1604 Superstreet improvements, the draft CE was submitted for review and responses were prepared to TxDOT, TPWD, and FHWA comments. Also, coordination on archeological and endangered species issues continues. A preliminary draft for the second CE was submitted for the underpass improvements at Loop 1604 and SH 151.

### **US 281/Loop 1604 Construction Oversight**

A partnering workshop was held on August 18 involving FHWA, TxDOT, the Alamo RMA staff and GEC, and the Williams Brothers Design/Build team. The partnering workshop resulted in formulation of several major goals and laid the framework for achieving a world class project.

GEC Activities Report  
August 2010

*Design Oversight*

Oversight staff has been attending weekly meetings and workshops with the design/build team, conducting over the shoulder reviews, setting up document control, and reviewing plan submittals. Schematic plans, environmental documents, illumination plans, and subsurface investigation plans were reviewed in August.

*Construction Oversight*

Although construction will not begin for a few months, construction oversight staff have continued preparation of document control and inspection reporting procedures for approval by FHWA, reviewed draw request and baseline construction schedules, and attended weekly meetings with the design/builder. Currently staff are preparing to move into the field office in September.

*See attached monthly report for details of the design and construction status for the US 281/Loop 1604 Interchange project.*



# U.S. 281 North/Loop 1604 Interchange Design/Build Progress Report August 2010

---

---

## **General Summary**

Work accomplished in August, 2010:

- Partnering Meeting
- Environmental Submittals
- Schematic Development
- 30% plan Development
- Subsurface Geotechnical Exploration
- Field office assembly

Work efforts continue to be focused on project design. Coordination meetings, over-the-shoulder reviews, and workshops are on-going with participation of Williams Brothers, Alamo RMA, TxDOT, the GEC and others in support of the design effort.

---

---

## **Submittals:**

The following Submittals were received and reviewed this month. These are prerequisites for construction of the project.

### **Jurisdictional Determination of Waters**

A Jurisdictional Determination of Waters report summarizes both temporary and permanent impacts to jurisdictional waterbodies within the project limits that may be impacted by the project. Jurisdictional waters are defined as lakes, rivers, streams, wetlands, and other water features, which are used, or were historically used, for commerce purposes.

### **Water Pollution Abatement Plan**

A water pollution abatement plan (WPAP) is required for any regulated activity proposed on the Edwards Aquifer recharge zone. This includes any construction-related activity on the recharge zone, such as the construction of roadways.

### **Notification of Design Revision**

A notification of design revision was transmitted to TxDOT to clarify changes to the schematic. A meeting with the affected property owners (MAPO) is scheduled for September 9, 2010.

## **Design Status:**

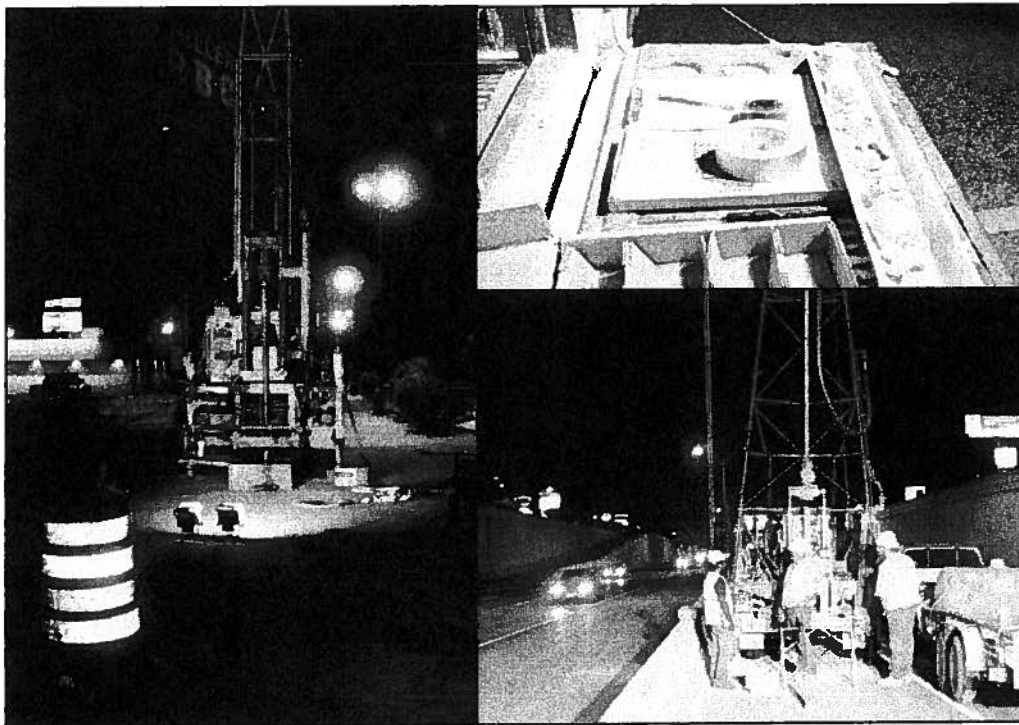
**Schematic:** A schematic revision has been submitted. This schematic updates the currently approved schematic with approved alternative technical concepts. It is under review by TxDOT and FHWA.

**30% Plans:** Over the shoulder reviews, progress meetings, and design workshops continue as the 30% plans are being prepared. This has included 30% Roadway plans (Segment 1), Continuous Illumination (Segment 7) and the DC Bridge Layout (Segment 1).

**Release for Construction Plans:** No release for construction plans have been submitted. No construction plans will be approved until Schematic and 30% plans are complete and approved.

## **Geotechnical Exploration**

Subsurface Geotechnical Exploration (Coring) began on August 3<sup>rd</sup> along Loop 1604/ US 281 Mainlanes and Frontage Roads. There are a total of 161 core locations. Weekly traffic control activity reports have been developed to contribute to public awareness about the project area while coring activities with lane closures occurred from 10:00 pm to 5:00 am.

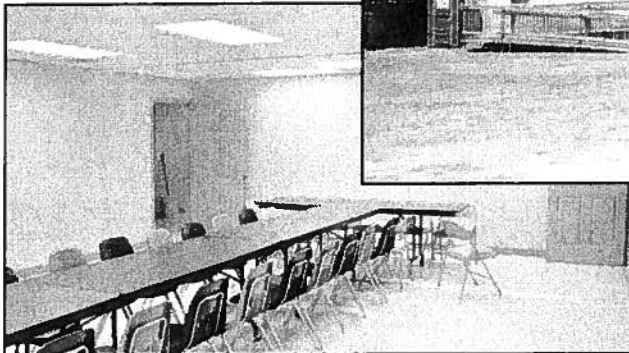


Pictured above are samples being drawn from the south west corner of the Interchange and along US 281 Southbound Mainlanes

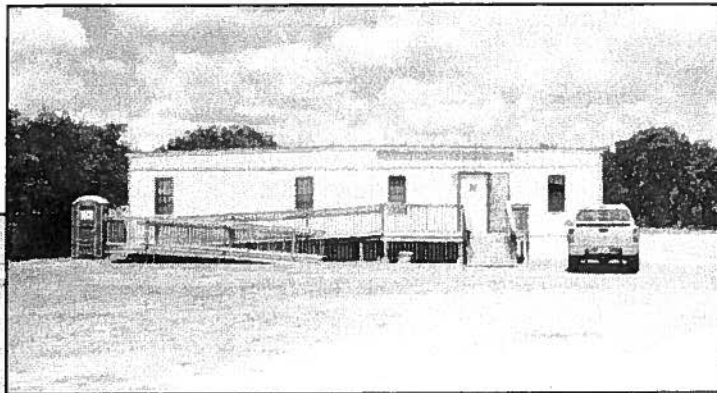
## **Construction Activities**

No construction is anticipated to commence until November, 2010.

The Design Builder has assembled the field office. The office will be shared between Alamo RMA, TxDOT, and Williams Brothers. The office will be operational by mid September. The office is a trailer complex located at 18952 Redland Road.



Large conference room



Front view of the completed field office

## **Subcontracting/ DBE Status**

The DBE goal is 11.1% for both design and construction efforts. Currently Williams Brothers has entered into \$12 Million in subcontracts for design, materials testing, environmental, and drilling services of which \$852,639 is DBE.

## **Partnering Meeting**

The U.S. 281/Loop 1604 Interchange Partnering Review Workshop was held on August 18 and included members from the Alamo RMA, the Oversight Team, the Design-Build Team, TxDOT, and FHWA. The goal of the workshop was to have the teams work together to determine key risks, issues, and opportunities and to begin developing a stronger standing relationship with the teams to achieve the challenging goals set forth in the workshop. Prior to the workshop was an executive level workshop and alignment session designed to focus on the project's success and to resolve current issues in order for the teams to progress.

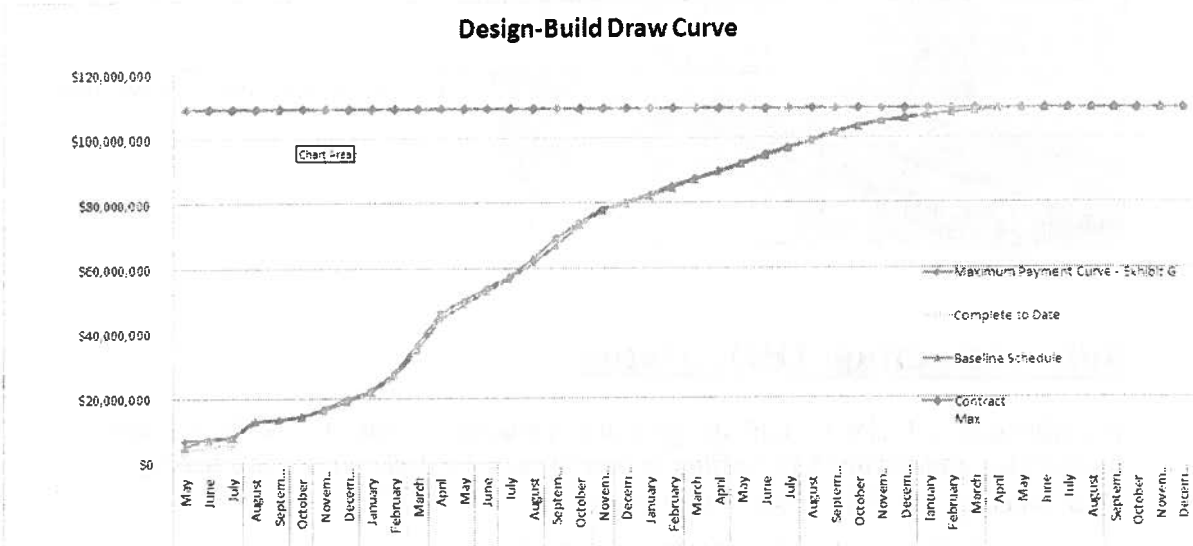
## Project Schedule & Draw Request

The Design Builder's second draw request for activities through the end of July has been processed. This draw request consisted mainly of costs incurred for preliminary design of the schematic and efforts related to 30% design. A third draw request is currently under development as well as an update to the baseline schedule.

**Payments:**

Contract Amount:	\$ 109,097,279.00
Authorized Changes:	\$ 0.00
Current Authorized Contract Amount:	\$ 109,097,279.00
Approve Amount for Work Complete through Draw #2:	\$ 5,745,665.01
Amount remaining for Work to be Complete:	\$ 103,351,613.99
Total Project Complete to date:	5.3%

**Schedule:**



Substantial Completion date for the Direct Connectors: November 9, 2012  
 Substantial Completion date for remainder for all other work: May 27, 2013

Alamo Regional Mobility Authority  
Loop 1604 EIS

LOOP 1604 EIS TEAM PROJECT AUTHORIZATION STATUS REPORT - as of July 31, 2010

Project Tasks and Firms	BUDGET STATUS				
	Total Amount Currently Under Commitment	PA #2 <sup>1</sup>	PA #2 Costs billed through 7/31/10*	PA #2 BALANCE	PA #2 % COMPLETE
<b>Task 1.0 - Project Management, Coordination, and Administration</b>	\$470,448.30	\$470,448.30	\$367,059.41	\$103,388.89	78.02%
Michael Baker Jr., Inc.	\$355,279.85	\$355,279.85	\$280,473.24	\$74,806.61	78.94%
Rodriguez Transportation Group, Inc.	\$35,996.51	\$35,996.51	\$35,996.51	\$0.00	100.00%
RJ Rivera & Associates, Inc.	\$7,354.25	\$7,354.25	\$6,968.69	\$385.56	94.76%
Blanton & Associates, Inc.	\$13,638.66	\$13,638.66	\$10,153.47	\$3,485.19	74.45%
Cox-McLain Environmental Consulting, Inc.	\$13,507.20	\$13,507.20	\$8,094.80	\$5,412.40	59.93%
Zara Environmental, LLC	\$21,831.51	\$21,831.51	\$9,636.38	\$12,195.13	44.14%
Poznecki-Camarillo, Inc.	\$22,840.32	\$22,840.32	\$15,736.32	\$7,104.00	68.90%
<b>Task 2.0 - Public Awareness, Involvement, and Education</b>	\$1,009,382.50	\$1,009,382.50	\$459,421.56	\$549,960.94	45.52%
Michael Baker Jr., Inc.	\$613,689.02	\$613,689.02	\$261,593.53	\$352,095.49	42.63%
Lockwood, Andrews and Newman, Inc.	\$53,268.74	\$53,268.74	\$22,043.30	\$31,225.44	41.38%
Rodriguez Transportation Group, Inc.	\$12,368.03	\$12,368.03	\$0.00	\$12,368.03	0.00%
Cox-McLain Environmental Consulting, Inc.	\$12,060.00	\$12,060.00	\$7,239.53	\$4,820.47	60.03%
Blanton & Associates, Inc.	\$21,340.68	\$21,340.68	\$17,666.82	\$3,673.86	82.78%
Zara Environmental, LLC	\$8,763.97	\$8,763.97	\$1,500.26	\$7,263.71	17.12%
Poznecki-Camarillo, Inc.	\$45,554.88	\$45,554.88	\$16,285.43	\$29,269.45	35.75%
RJ Rivera & Associates, Inc.	\$242,337.18	\$242,337.18	\$133,092.69	\$109,244.49	54.92%
<b>Task 3.0 - Environmental Impact Statement (EIS) Initiation</b>	\$22,628.88	\$22,628.88	\$18,503.66	\$4,125.22	81.77%
Michael Baker Jr., Inc.	\$22,628.88	\$22,628.88	\$18,503.66	\$4,125.22	81.77%
<b>Task 4.0 - Draft Environmental Impact Statement (DEIS)</b>	\$1,802,050.64	\$1,802,050.64	\$1,524,987.88	\$277,062.76	84.63%
Michael Baker Jr., Inc.	\$609,929.71	\$609,929.71	\$529,298.93	\$80,630.78	86.78%
Blanton & Associates, Inc.	\$647,074.67	\$647,074.67	\$523,603.58	\$123,471.09	80.92%
Cox-McLain Environmental Consulting, Inc.	\$109,061.80	\$109,061.80	\$62,933.47	\$46,128.33	57.70%
LBG-Guyton Associates	\$36,528.44	\$36,528.44	\$36,433.61	\$94.83	99.74%
Zara Environmental, LLC	\$338,634.62	\$338,634.62	\$314,046.62	\$24,588.00	92.74%
Poznecki-Camarillo, Inc.	\$60,821.40	\$60,821.40	\$58,671.67	\$2,149.73	96.47%
<b>Task 5.0 - Final Environmental Impact Statement (EIS)</b>	\$0.00	\$0.00	\$0.00	\$0.00	
<b>Task 6.0 - Engineering</b>	\$1,429,444.64	\$1,429,444.64	\$1,393,365.28	\$36,079.36	97.48%
Michael Baker Jr., Inc.	\$314,222.52	\$314,222.52	\$312,034.07	\$2,188.45	99.30%
Lockwood, Andrews and Newman, Inc.	\$158,777.16	\$158,777.16	\$150,059.04	\$8,718.12	94.51%
Rodriguez Transportation Group, Inc.	\$639,953.40	\$639,953.40	\$639,953.40	\$0.00	100.00%
RJ Rivera & Associates, Inc.	\$264,541.56	\$264,541.56	\$260,919.44	\$3,622.12	98.63%
SAM	\$51,950.00	\$51,950.00	\$30,399.33	\$21,550.67	58.52%
<b>Totals</b>	<b>\$4,733,954.96</b>	<b>\$4,733,954.96</b>	<b>\$3,763,337.81</b>	<b>\$970,617.15</b>	<b>79.50%</b>

\*Figures do not include outstanding subconsultant invoices

<sup>1</sup>Includes Supplement No. 1 and No. 2 to PA #2

All Firms	PA #1 Costs PA Complete	PA #2 Costs Through 7/31/10	Total Costs Through 7/31/10
Michael Baker Jr., Inc.	\$854,300.58	\$1,401,903.45	\$2,256,204.03
Lockwood, Andrews and Newman, Inc.	\$175,116.97	\$172,102.34	\$347,219.31
Rodriguez Transportation Group, Inc.	\$73,129.49	\$675,949.91	\$749,079.40
RJ Rivera & Associates, Inc.	\$104,612.76	\$400,980.82	\$505,593.58
Community Awareness Services	\$89,991.77	\$0.00	\$89,991.77
Blanton & Associates, Inc.	\$16,176.07	\$551,423.87	\$567,599.94
Cox-McLain Environmental Consulting, Inc.	\$6,260.80	\$78,267.80	\$84,528.60
LBG-Guyton Associates	\$10,081.15	\$36,433.61	\$46,514.76
Zara Environmental, LLC	\$15,731.00	\$325,183.26	\$340,914.26
Poznecki-Camarillo, Inc.	\$22,508.22	\$90,693.42	\$113,201.64
SAM	\$0.00	\$30,399.33	\$30,399.33
<b>TOTALS</b>	<b>\$1,367,908.81</b>	<b>\$3,763,337.81</b>	<b>\$5,131,246.62</b>

**Alamo Regional Mobility Authority**  
**Loop 1604 - Environmental Impact Statement and Record of Decision**

**LOOP 1604 EIS TEAM PROJECT AUTHORIZATION STATUS REPORT - as of July 31, 2010**

<sup>1</sup> Total Completed PA #1 and Current PA #2	\$	6,101,863.77	
<sup>1</sup> Total DBE Completed PA #1 and Current PA #2	\$	2,846,090.75	46.64%
Total Agreement Costs Billed through 7/31/10	\$	5,131,246.64	
Total DBE Costs Billed through 7/31/10	\$	2,450,909.20	47.76%
Total Local Effort Costs Billed through 7/31/10	\$	1,245,490.82	24.27%

**SUPPORTING INFORMATION**

**DBE Effort Distribution through 7/31/10**

DBE Firms	Completed PA #1	<sup>1</sup> PA #2 Contracted	PA #2 Invoiced	Total Costs Billed
Blanton & Associates, Inc.	\$ 16,176.07	\$ 682,054.02	\$ 551,423.85	\$ 567,599.92
Community Awareness Services, Inc.	\$ 89,991.77	\$ -		\$ 89,991.77
Cox/McLain Environmental Consulting, Inc.	\$ 6,260.80	\$ 134,629.00	\$ 78,267.80	\$ 84,528.60
Poznecki-Camarillo, Inc.	\$ 22,508.22	\$ 129,216.60	\$ 90,693.42	\$ 113,201.64
RJ Rivera & Associates, Inc.	\$ 104,612.76	\$ 514,232.99	\$ 400,980.82	\$ 505,593.58
Rodriguez Transportation Group	\$ 73,129.49	\$ 688,317.94	\$ 675,949.91	\$ 749,079.40
Zara Environmental, LLC	\$ 15,731.00	\$ 369,230.09	\$ 325,183.29	\$ 340,914.29
<b>Total</b>	<b>\$ 328,410.11</b>	<b>\$ 2,517,680.64</b>	<b>\$ 2,122,499.09</b>	<b>\$ 2,450,909.20</b>

**Local Effort Distribution through 7/31/10**

**Includes Completed PA #1 and PA #2 Billed Costs**

	Local	Non-local	Total	% Local
Michael Baker Jr., Inc.	\$ 302,193.47	\$ 1,954,010.56	\$ 2,256,204.03	13.39%
Subconsultants (DBE and Non-DBE)	\$ 943,297.35	\$ 1,931,745.26	\$ 2,875,042.61	32.81%
<b>Total</b>	<b>\$ 1,245,490.82</b>	<b>\$ 3,885,755.82</b>	<b>\$ 5,131,246.64</b>	<b>24.27%</b>

<sup>1</sup>Includes Supplement No. 1 and No. 2 to PA #2

## **Loop 1604 Environmental Impact Statement: U.S. 90 to Interstate Highway 35**

### **Project Authorization No. 2 – Executed November 9, 2009 Consultant Team Progress Report No. 14**

Progress for period: July 1, 2010 through July 31, 2010  
Contract dated April 09, 2009

---

#### **ACTIVITIES COMPLETED IN THIS PERIOD:**

##### **Task 1.0 – Project Management, Coordination, and Administration**

###### **Project Management**

- Day to day management of the project budget, schedule, work progress, and project team. These efforts continued through this reporting period (July 1 through July 31, 2010).
- Continued coordination with Alamo Regional Mobility Authority (Alamo RMA) on Contracting and Sub-consultant invoicing and progress reporting processes and procedures.
- Reviewed subconsultant progress reports and processed subconsultant invoices.
- Provided oversight for the production of the Preliminary Draft Environmental Impact Statement (DEIS).
- Completed draft of Project Authorization (PA) # 3 scope and associated fee. Submitted for Alamo RMA staff review on July 20, 2010.
- Completed Supplement #3 to PA #2 for Alamo RMA review and processing.
- Provided updated Overhead forms and Insurance information for Alamo RMA review and processing.

###### **Project Coordination**

- Held internal financial-focused conference call on June 1, 2010 (11:00 AM to 11:30 AM). Participants discussed Project Authorization #2 funding and proposed Project Authorization #3 budgeting.
- Held a June 8, 2010 conference call with the Loop 1604 Engineering Team staff to discuss conceptual alternative cost estimates. The call occurred from 1:30 PM to 2:30 PM.
- Held a conference call to discuss Public Involvement strategies for Project Authorization # 3 and the remainder of the Loop 1604 EIS project. The call occurred on June 15, 2010 (10:00 AM to 11:00 AM).
- Held two Loop 1604 EIS Project Status conference calls with Alamo RMA staff on July 2, 2010 (10:00 AM to 10:30 AM) and on July 23, 2010 (10:00 AM to 10:30 AM) Participants discussed project status, emerging issues and activities and events planned in the following two-week time periods.
- Participated in a conference call meeting with the U.S. 281 EIS Team and Alamo RMA staff regarding the new Noise Rule. Participants discussed changes to the analytical process for evaluating noise in an EIS and a strategy for addressing the new noise rule in the on-going EIS work for Loop 1604 and U.S. 281. The call occurred on July 22, 2010 from 10:00 AM to 10:30 AM.
- Participated in a meeting with Alamo RMA staff, U.S. 281 EIS Team, and the City of San Antonio regarding the development of the North Sector Plan. The meeting occurred at the Alamo RMA offices located at 1222 North Main Street, Suite 1000, San Antonio, Texas, 78212. The meeting started at 4:00 PM and concluded at 5:00 PM.

###### **Project Administration and Record Keeping**

- Continued entering files into the Loop 1604 Project and Administrative Record database.

- Collected technical reports, papers, publications, etc. referenced in the DEIS for inclusion into the Project/Administrative Record database.

**Task 1.0 of PA #2 is 92% complete.**

## **Task 2.0 – Public Awareness, Involvement, and Education**

### **Public Meetings**

- Still pending receipt of comments to Scoping Meeting #2 Summary Report submitted to TxDOT on June 28, 2010.

### **Other Community Engagement Meetings**

- Conducted follow-up coordination with CAG members as needed.
- Made correction as requested by CAG member to CAG Meeting #3 summary.
- Resubmit and coordinate with CAG members regarding dates for CAG Meeting #4.
- No requests for presentations received this month.

### **Project Website and Virtual Communications**

- Continued ongoing maintenance and updates to the Loop 1604 project website and project specific social media sites (Twitter, Facebook, YouTube, and Flickr).
- Website homepage hits to date total 5,771 (reported on July 28, 2010).
- Facebook weekly statistics (reported on July 26, 2010):
  - 32 Monthly Active Users (-58.4% vs. last week)
  - 413 total Fans (+0.2% vs. last week)
  - 0 Wall Posts, Comments, and Likes this week (no change vs. last week)
  - 293 page views this week (+14.9% vs. last week)

### **Media Campaign**

- No activities this period.

### **School Education Campaign**

- No activities this period.

### **Surveys**

- No activities this period.

### **Other Communication Tools**

- Project Hotline (1-888-4LP-1604) – Continued to monitor hotline.
- Project Office – Continued to staff office. No visits this month.
- Project E-mail – Continue to monitor Alamo RMA Loop 1604 EIS e-mail account and respond to inquiries.

### **Notices and Public Information Materials**

- Mailing Lists – Ongoing updates, including DEIS distribution list.
- Continued to draft newsletter.

**PA #2 Task 2.0 is 96% complete.**

## **Task 3.0 – Environmental Impact Statement Initiation**

### **Project Coordination Plan**

- Most recent revision of the Project Coordination Plan is still under review at TxDOT and FHWA. Continued coordination with TxDOT and FHWA to obtain comments.

**PA #2 Task 3.0 is 96% complete.**

#### **Task 4.0 – Draft Environmental Impact Statement (DEIS)**

##### **Need and Purpose**

- No activity on this subtask to report during this reporting period. Most recent revision of the Need and Purpose is still under review at TxDOT and FHWA.

##### **Alternatives Analysis**

- Submitted technical memorandum regarding traffic modeling, specifically the technical approach for modeling managed lanes, for Alamo RMA staff review. Submitted the technical memorandum via e-mail on July 12, 2010. Revisions pending Alamo RMA staff review.
- Adjusted existing right-of-way lines based on recently discovered TxDOT right-of-way mapping. Original existing right-of-way files provided by TxDOT included parcels that TxDOT had yet to acquire. The Loop 604 Team discovered this issue during right-of-entry proceedings for archaeological surveys. Existing right-of-way files have since been updated and corrected to reflect current ownership. Right-of-way reported in the preliminary DEIS will be updated to reflect the resolution of this issue.

##### **Affected Environment**

- Continued field work to identify karst features and associated Threatened & Endangered species habitat adjacent to the Loop 1604 right-of-way.
- Completed write-ups of the Affected Environment sections of the EIS.
- Continued field work and reporting related to cultural resources.

##### **Environmental Consequences**

- Completed impact calculations and drafting of the Environmental Consequences sections of the DEIS.

##### **Indirect and Cumulative Impacts Analysis**

- Continued preparation of Cumulative Impacts Analysis section of the DEIS.
- Continued preparation of the Indirect Impacts section of the DEIS.

##### **DEIS Preparation and Circulation**

- Prepared and submitted preliminary Draft EIS to RMA.

**PA #2 Task 4.0 is 90% complete.**

#### **Task 6.0 – Engineering**

##### **Traffic**

- Performed internal reviews and updates to the traffic projection scenario memo.

##### **Mapping and Survey**

- Investigated right-of-way mapping on the western side of the project which did not reflect parcels planned for acquisition but never acquired by TxDOT. Utilized updating mapping to determine updated potential right-of-way acquisition acreage.

##### **Data Assembly and Review**

- No activity to report during this period.

#### **Route Studies and Alternatives Analysis**

- Performed internal reviews and updates to DEIS text for alternatives.

#### **Right of Way/Utility Coordination**

- No activity to report during this period.

**PA #2 Task 6.0 is 98% complete.**

### **ACTIVITIES PLANNED FOR THE NEXT PERIOD**

#### **Task 1.0 – Project Management, Coordination, and Administration**

##### **Project Management**

- Continue day-to-day management of the project budget, schedule, work progress, and project team. These efforts commenced on May 1, 2009 and are expected to continue throughout the life of this Project Authorization.
- Develop and submit monthly invoices and progress reports.
- Finalize and execute Project Authorization #3.
- Finalize and execute Supplement #3 to Project Authorization #2.

##### **Project Coordination**

- Coordinate with the Alamo RMA via weekly conference calls to discuss project progress and emerging issues.
- Coordinate with the U.S. 281 EIS team regarding DEIS progress, technical approach, etc.
- Coordinate with Alamo RMA staff on the review of the preliminary DEIS.

##### **Project Administration and Record Keeping**

- Continue populating the Project and Administrative Record database with files as the EIS process proceeds.

#### **Task 2.0 – Public Awareness, Involvement, and Education**

##### **Public Meetings**

- Revise Scoping Meeting #2 Summary Report to address TxDOT review comments.

##### **Other Community Engagement Meetings**

- Continue preparing for CAG Meeting #4 and identify a date.
- Coordinate requests for presentations, if any.

##### **Project Website and Virtual Communications**

- Continue ongoing maintenance and updates to the Loop 1604 project website and project specific social media sites (Twitter, Facebook, YouTube, and Flickr).

##### **Media Campaign**

- Support requests from Alamo RMA as needed.

##### **School Education Campaign**

- No activities anticipated for this time period. Anticipate rehire in August when school begins again.

### **Surveys**

- No activities anticipated for this time period.

### **Other Communication Tools**

- Project Hotline (1-888-4LP-1604) – Continue to monitor hotline.
- Project Office – Continue to staff office.
- Project E-mail – Continue to monitor Alamo RMA Loop 1604 EIS e-mail account and responded to inquiries.

### **Notices and Public Information Materials**

- Mailing Lists – Ongoing updates.
- Draft Newsletter.

## **Task 3.0 – Environmental Impact Statement Initiation**

### **Project Coordination Plan**

- No activities are planned for the next reporting period.

## **Task 4.0 – Draft Environmental Impact Statement**

### **Need and Purpose**

- Address FHWA comments, if any, on the Need and Purpose.

### **Alternatives Analysis**

- Revise Alternatives Chapter of DEIS to address Alamo RMA comments.

### **Affected Environment**

- Revise Affected Environment sections of DEIS to address Alamo RMA comments.

### **Environmental Consequences**

- Revise Environmental Consequences sections of the DEIS to address Alamo RMA comments.

### **Indirect and Cumulative Impacts Analysis**

- Continue to coordinate with the U.S. 281 EIS team.
- Revise and resubmit the Indirect and Cumulative Impacts Analysis for the DEIS.

## **Task 6.0 – Engineering**

### **Traffic**

- Address Alamo RMA comments on the traffic studies included in the preliminary DEIS.

### **Mapping and Survey**

- No activities anticipated during this time period

### **Engineering Data Assembly and Review**

- No activities anticipated during this time period.

### **Engineering Route Studies and Design**

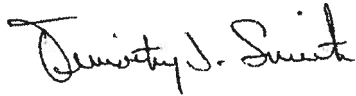
- No activities anticipated during this time period.

## **PROBLEMS/DELAYS ENCOUNTERED:**

- MPO is responsible for preparing the Regional Toll Analysis. FHWA to provide direction to Alamo RMA regarding additional requirements, if any, to complete the Regional Toll Analysis for the DEIS.
- Existing right-of-way files originally provided by TxDOT included property parcels that TxDOT had yet to acquire. The Loop 1604 EIS Team discovered this issue during right-of-entry proceedings undertaken for archaeological field surveys. The Loop 1604 Team revised the existing right-of-way to reflect current parcel ownership.

**STRATEGIES FOR ADDRESSING PROBLEMS/DELAYS:**

- Provide Alamo RMA with support as needed to complete the Regional Toll Analysis.
- Preliminary DEIS right-of-way acreages will be revised as part of the comment-response process currently underway with Alamo RMA staff.



---

**Tim Smith**  
**Loop 1604 EIS Project Manager**



Alamo Regional Mobility Authority  
Environmental Impact Statement

EIS TEAM WORK AUTHORIZATION STATUS - as of July 30, 2010

Project Authorization - Description	Total Amount under Commitment	BUDGET STATUS						REMARKS
		PA #1	PA #2	PA #3	Costs to be billed through 9/7/2010*	BALANCE	% COMPLETE	
<b>Task 1.0 - Project Management &amp; Coordination</b>								
JACOBS Engineering Group	\$803,908.62	\$199,892.67	\$290,424.62	\$313,491.32	\$546,443.16	\$257,465.45	67.97%	
Ecological Communications Corporation	\$15,949.81	\$5,427.32	\$3,001.13	\$8,921.36	\$12,919.86	\$2,429.93	84.17%	
Hicks & Company	\$45,005.89	\$15,986.67	\$12,097.32	\$17,311.90	\$18,242.24	\$28,763.65	40.53%	
Smith & Associates Consulting, LLC.	\$35,603.30	\$5,679.99	\$0.00	\$28,923.31	\$22,200.60	\$13,402.70	62.36%	
Ximenes & Associates, Inc.	\$16,671.92	\$10,621.37	\$0.00	\$5,709.55	\$6,251.75	\$10,320.17	37.72%	
Zara Environmental, LLC.	\$11,211.37	\$3,620.24	\$0.00	\$7,591.13	\$18,265.55	-\$7,058.18	162.98%	
<b>Task 2.0 - Community Involvement</b>								
JACOBS Engineering Group	\$1,087,919.08	\$161,590.82	\$486,803.85	\$439,524.41	\$719,902.14	\$369,016.94	66.17%	
Ecological Communications Corporation	\$524,028.83	\$59,628.33	\$219,537.21	\$244,863.29	\$442,893.50	\$81,135.33	84.52%	
Hicks & Company	\$14,405.43	\$0.00	\$14,405.43	\$0.00	\$5,922.75	\$8,482.68	41.11%	
Smith & Associates Consulting, LLC.	\$18,924.52	\$698.88	\$10,861.64	\$5,264.00	\$10,877.24	\$5,947.28	64.65%	
Ximenes & Associates, Inc.	\$233,344.45	\$33,300.03	\$134,836.08	\$65,328.34	\$152,981.89	\$80,562.56	65.50%	
Zara Environmental, LLC.	\$276,184.68	\$57,483.25	\$96,712.72	\$121,988.71	\$102,082.86	\$174,101.82	36.96%	
<b>Task 3.0 - Assembly &amp; Review of Data</b>								
JACOBS Engineering Group	\$282,029.97	\$12,504.34	\$169,928.63	\$2,080.07	\$5,143.90	\$17,787.27	22.43%	
Ecological Communications Corporation	\$142,006.21	\$89,525.64	\$53,080.57	\$0.00	\$271,494.85	-\$128,886.84	190.39%	
Hicks & Company	\$87,337.68	\$14,734.72	\$52,802.96	\$0.00	\$4,064.95	-\$4,064.95	0.00%	
Smith & Associates Consulting, LLC.	\$0.00	\$0.00	\$0.00	\$0.00	\$0.00	\$0.00	0.00%	
Ximenes & Associates, Inc.	\$0.00	\$0.00	\$0.00	\$0.00	\$0.00	\$0.00	0.00%	
Zara Environmental, LLC.	\$55,688.68	\$5,684.37	\$50,004.31	\$0.00	\$50,580.15	\$5,108.53	90.83%	
<b>Task 4.0 - EIS Project Initiation</b>								
JACOBS Engineering Group	\$147,501.78	\$89,916.25	\$54,303.10	\$3,280.43	\$140,118.39	\$7,383.39	84.95%	
Ecological Communications Corporation	\$141,871.78	\$84,094.25	\$54,303.10	\$3,280.43	\$128,136.63	\$15,541.15	89.03%	
Hicks & Company	\$5,824.00	\$0.00	\$0.00	\$0.00	\$3,796.81	-\$3,796.81	0.00%	
Smith & Associates Consulting, LLC.	\$0.00	\$0.00	\$0.00	\$0.00	\$10,063.15	-\$4,259.15	173.13%	
Ximenes & Associates, Inc.	\$0.00	\$0.00	\$0.00	\$0.00	\$100.00	-\$100.00	0.00%	
Zara Environmental, LLC.	\$0.00	\$0.00	\$0.00	\$0.00	\$0.00	\$0.00	0.00%	
<b>Task 5.0 - Alternative Analysis</b>								
JACOBS Engineering Group	\$1,332,259.08	\$0.00	\$1,332,259.08	\$0.00	\$1,014,600.43	\$317,658.65	76.16%	
Ecological Communications Corporation	\$1,332,259.08	\$0.00	\$1,332,259.08	\$0.00	\$1,014,600.43	\$317,658.65	76.16%	
Hicks & Company	\$0.00	\$0.00	\$0.00	\$0.00	\$0.00	\$0.00	0.00%	
Smith & Associates Consulting, LLC.	\$0.00	\$0.00	\$0.00	\$0.00	\$0.00	\$0.00	0.00%	
Ximenes & Associates, Inc.	\$0.00	\$0.00	\$0.00	\$0.00	\$0.00	\$0.00	0.00%	
Zara Environmental, LLC.	\$0.00	\$0.00	\$0.00	\$0.00	\$0.00	\$0.00	0.00%	
<b>Task 6.0 - Draft EIS</b>								
JACOBS Engineering Group	\$1,989,474.49	\$0.00	\$616,577.93	\$1,382,896.56	\$548,830.27	\$1,450,644.22	27.45%	
Ecological Communications Corporation	\$1,196,224.19	\$0.00	\$250,931.21	\$945,292.98	\$375,299.43	\$820,924.76	31.37%	
Hicks & Company	\$388,379.13	\$0.00	\$220,246.15	\$168,132.98	\$33,408.28	\$354,972.85	8.60%	
Smith & Associates Consulting, LLC.	\$1,884.36	\$0.00	\$0.00	\$1,884.36	\$0.00	\$1,884.36	0.00%	
Ximenes & Associates, Inc.	\$396,165.39	\$0.00	\$145,400.57	\$250,764.82	\$140,124.56	\$256,040.83	35.37%	
Zara Environmental, LLC.	\$0.00	\$0.00	\$0.00	\$0.00	\$0.00	\$0.00	0.00%	
<b>Task 7.0 - Final EIS and Schematic Design</b>								
Expenses	\$309,305.28	\$22,467.00	\$151,183.28	\$135,655.00	\$122,621.46	\$186,863.80	59.64%	
JACOBS Engineering Group	\$127,210.00	\$5,500.00	\$55,680.00	\$66,030.00	\$28,363.99	\$98,846.01	22.30%	
Ecological Communications Corporation	\$33,180.04	\$200.00	\$114.52	\$0.00	\$125.62	\$186.50	39.94%	
Hicks & Company	\$92,020.00	\$4,000.00	\$10,280.04	\$22,500.00	\$9,813.28	\$23,366.76	29.58%	
Smith & Associates Consulting, LLC.	\$29,013.70	\$1,117.00	\$6,170.00	\$20,800.00	\$64,371.06	\$27,646.94	69.95%	
Ximenes & Associates, Inc.	\$29,013.70	\$2,000.00	\$8,486.70	\$20,325.00	\$6,049.46	\$22,964.24	20.85%	
Zara Environmental, LLC.	\$5,962,801.28	\$586,473.09	\$3,101,480.47	\$2,274,847.72	\$3,649,949.65	\$2,312,851.63	61.21%	

\* Figures do not include outstanding subconsultant invoices



Alamo Regional Mobility Authority  
Environmental Impact Statement  
DBE and Local Effort Distribution (through 07/30/10)

Total Contracted (through 07/30/10) \$ 5,962,801.28  
DBE Contracted (through 07/30/10) 24% \$ 1,455,576.43

Total Costs (through 07/30/10) \$ 3,649,949.65  
DBE Costs (through 07/30/10) 19% \$ 678,883.16  
Local Effort Costs (through 07/30/10) 25% \$ 915,088.36

**SUPPORTING INFORMATION**

DBE Effort Distribution (through 07/30/10)

	Contracted	Invoiced
Ecological Communications Corporation	\$ 60,625.34	\$ 36,036.67
Hicks & Company	\$ 556,551.26	\$ 300,446.21
Ximenes	\$ 323,389.84	\$ 122,232.66
Zara	\$ 515,009.99	\$ 220,167.62
Total	\$ 1,455,576.43	\$ 678,883.16

Local Effort Distribution (through 07/30/10)

	Local	Non-Local	Total	% Local
Jacobs Engineering Group Inc.	\$ 549,137.20	\$ 2,178,210.79	\$ 2,727,347.99	20.13%
Subconsultants	\$ 365,951.16	\$ 556,650.50	\$ 922,601.66	39.67%
Total	\$ 915,088.36	\$ 2,734,861.29	\$ 3,649,949.65	25.07%

---

**Date** August 25, 2010  
**To** Lisa Adelman, Legal Counsel to the Alamo RMA  
**From** Jimmy Robertson, AICP  
**Subject** US 281 EIS  
**Period** July 1, 2010 through July 30, 2010

---

### **A. Activities During Reporting Period (July 2010)**

#### Project Management and Coordination

- Updated the project schedule
- Submitted invoice and progress report #14
- Managed UTSA US 281 EIS internship program
- Maintained Project Files and electronic database system
- Managed subcontractor work activity
- Prepared and executed subcontractor work authorizations under WA #3
- Continued coordination with Loop 1604 Team

#### Community Involvement

- Conducted PI team meetings
- Held coordination meeting with RMA community development staff
- Monitored emails from the US 281 EIS email account
- Monitored comments received from the 411 on 281 web site and online media outlets for information related to the US 281 EIS
- Updated copy and links on the 411on281/EIS web pages
- Developed topics for August 2010 E-Newsletter
- Developed CAC interview schedule and questions

#### EIS Project Initiation

- Submitted SAFETEA-LU Section 6002 concurrence documentation
- Worked on revision to Draft Coordination Plan

#### Draft EIS

- Continued development of geometric drawings (10% design) for reasonable alternatives
- Prepared preliminary Draft EIS sections
- Continued Right-of-Entry (ROE) management for biological surveys and maintenance of GIS data-base of ROE denials and permissions
- Performed excavations or karst feature surveys as ROE to private property was obtained
- Continued analysis of karst areas of avoidance
- Began development of karst report for biological assessment
- Completed Golden-cheeked warbler field report
- Continued baseline data gathering for indirect and cumulative impact analysis
- Continued work on ICI baseline descriptions
- Prepared for and conducted Land Use Panel workshop #2

# US 281 EIS Progress Report No. 15

## **B. Activities Planned for Upcoming Month (August 2010)**

### Project Management and Coordination

- Update the project schedule
- Update Project Procedures Manual
- Submit invoice and progress report #15
- Conduct 281/1604 joint leads coordination meeting
- Conduct pre-submittal coordination meetings
- Manage UTSA US 281 EIS internship program and present findings to RMA staff and Board
- Maintain Project Files and electronic database system
- Manage subcontractor work activity
- Prepare and execute supplemental work authorizations under WA #2
- Continue coordination with VIA regarding transit improvements
- Continue coordination with Loop 1604 Team

### Community Involvement

- Conduct PI team meetings
- Hold coordination meeting with RMA community development staff
- Develop and analyze metrics for website and social media efforts
- Maintain and update the US 281 EIS web pages
- Monitor and respond to emails from the US 281 EIS email account
- Monitor and update Facebook & Twitter accounts
- Monitor 411 on 281 web site and other media outlets for information related to the US 281 EIS
- Prepare and distribute August 2010 E-Newsletter
- Post blog to direct readers to the E-Newsletter
- Develop topics for September 2010 E-Newsletter
- Begin CAC member interviews
- Begin preparations for October CAC meeting
- Provide presentations to local agencies and community groups as directed by RMA
- Provide elected and appointed official briefings as directed by RMA

### EIS Project Initiation

- Revise SAFETEA-LU Section 6002 concurrence documentation as required
- Submit updated Draft Coordination Plan

### Draft EIS

- Complete development of 10% design for reasonable alternatives
- Prepare conceptual schematic technical memorandum
- Conduct review session with RMA engineering staff
- Continue preparation of preliminary Draft EIS sections
- Continue Right-of-Entry (ROE) management for biological surveys and maintenance of GIS data-base of ROE denials and permissions
- Continue excavations or karst feature surveys as ROE to private property is obtained
- Continue analysis of karst areas of avoidance
- Continue preparation of karst report for biological assessment
- Complete Expert Land Use Panel Report
- Continue coordination of indirect and cumulative impact analysis with Loop 1604 EIS team

# US 281 EIS

## Progress Report No. 15

### **C. Problems/Delays Encountered and Remedial Actions Needed and/or Exercised to Alleviate the Same**

- Efforts to expedite review and approval of the DEIS and FEIS will be needed to keep the overall project duration as close as possible to the originally intended three years. The US 281 EIS will be subject to TxDOT—ENV's newly announced changes in their procedure for federal oversight NEPA document review.

### **D. Safety Performance**

- Safety meetings were conducted daily prior to the start of karst survey fieldwork
- Appropriate personal protective equipment (PPE) was maintained during every karst field survey
- Working safely; no safety incidents or issues

**Page Intentionally Blank**