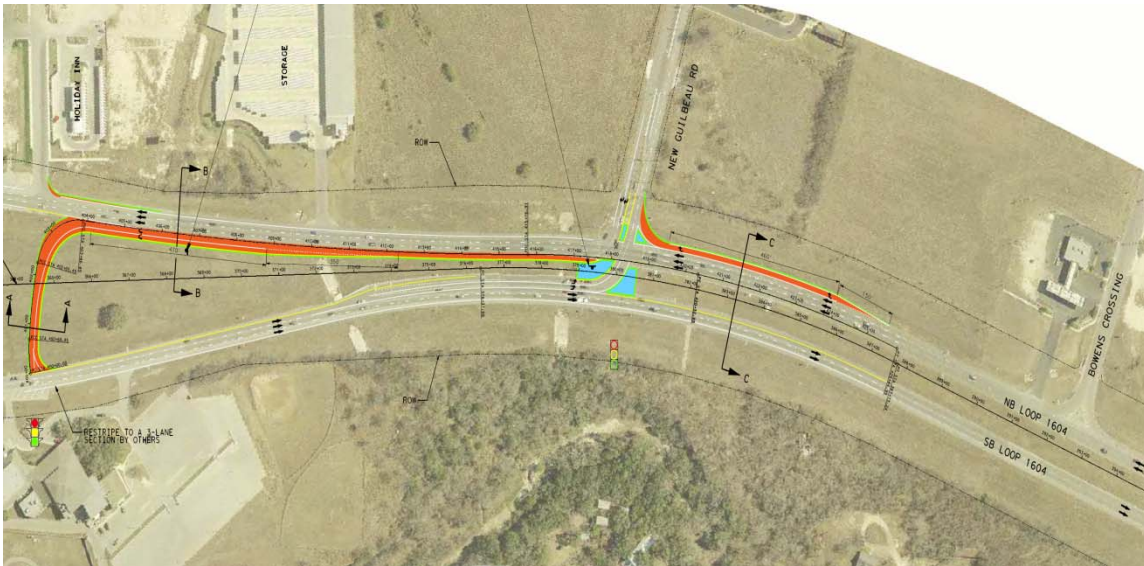


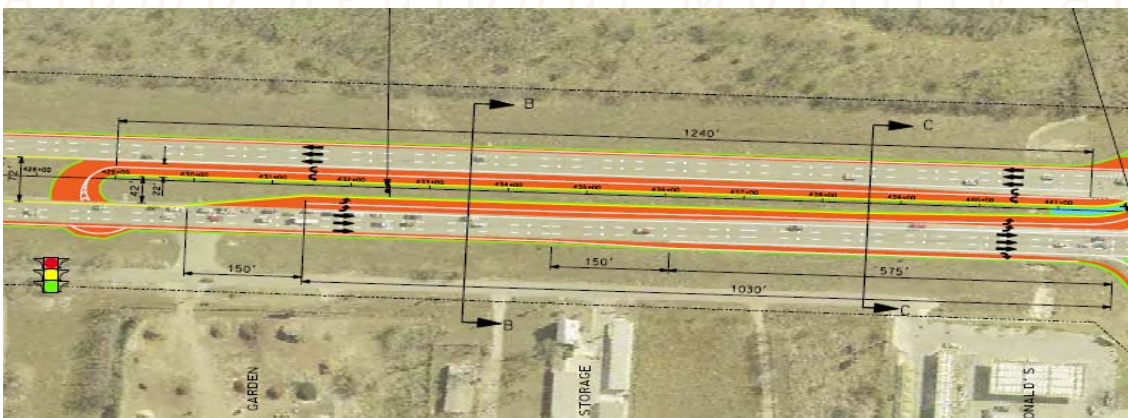
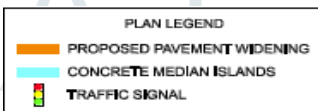
Proposed Loop 1604 Super Street

What is a Super Street? A Super Street is a type of intersection in which cross-street traffic is prohibited from going straight through or left at a divided highway intersection. Cross-street traffic must turn right, but can then access a U-turn to proceed in the desired direction.

From Braun Road to SH 151, improvements are being proposed that will bring the Super Street concept to Loop 1604, and some additional improvements which will help SH 151 and Loop 1604 are also included as part of this proposed project.



New Guilbeau at Loop 1604 – Braun road is to the West



Loop 1604 – Approaching Shaenfield – Intersection is to the East



PLAN LEGEND

- █ PROPOSED PAVEMENT WIDENING
- █ CONCRETE MEDIAN ISLANDS
- TRAFFIC SIGNAL

Loop 1604 at Shaenfield Intersection

Project Limit - Braun Rd to Shaenfield AM Peak Traffic - Today

Showing potential benefits of the Loop 1604 Super Street Improvements

Travel Condition	Total Delay (Hours)	Benefit	Total Stops (Vehicle)	Benefit	Avg Speed (Miles Per Hour)	Benefit
Existing	626.1		32,550		33.3	
Proposed Improvements	193.2	-69% Reduction	13,049	-60% Reduction	45.2	36% increase

Project Limit - Braun Rd to Shaenfield PM Peak Traffic - Today

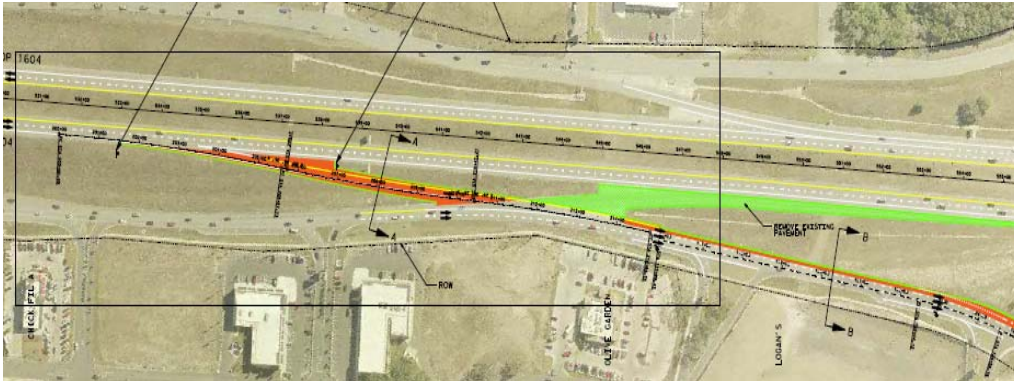
Showing potential benefits of the Loop 1604 Super Street Improvements

Travel Condition	Total Delay (HR)	Benefit	Total Stops (Veh)	Benefit	Avg Speed (MPH)	Benefit
Existing	1,150.4		39,482		27.5	
Proposed Improvements	244	-79% reduction	15,477	-61% reduction	45.4	65% increase

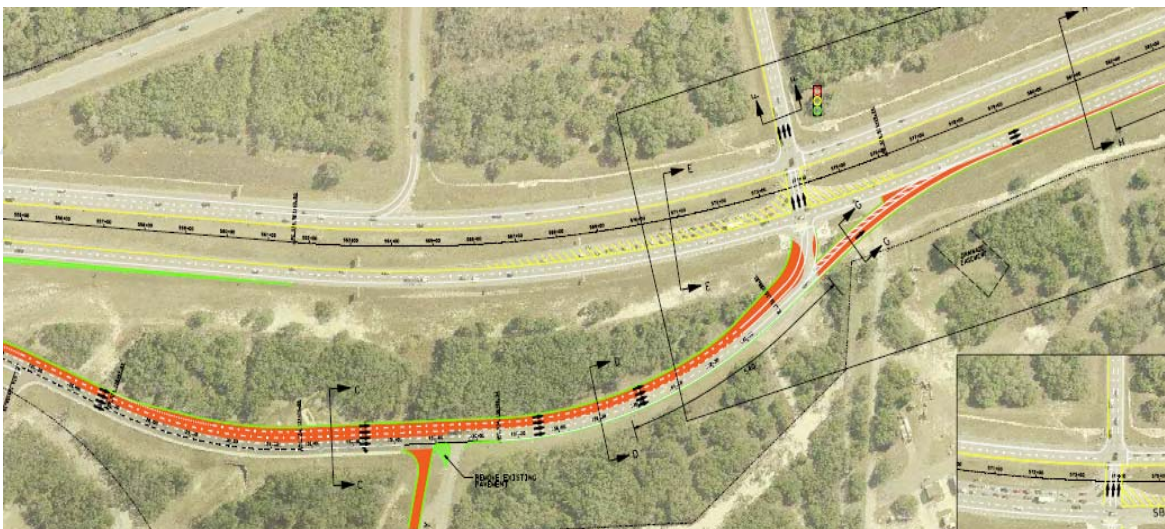
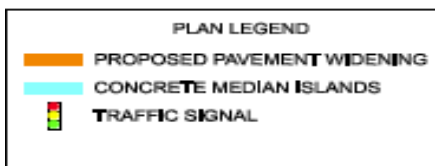
For More Information, or to see the animations showing how the Loop 1604 Super Street could work, please visit www.AlamoRMA.org

What about SH 151 and Loop 1604? Can something be done there to help?

As part of this proposed project, the entrance and exit ramp along Loop 1604 past Culebra is proposed to be reversed, and a new intersection for traffic entering SH 151 will be constructed. A future project, being proposed by TxDOT, will be constructing an underpass for SH 151 to tie into Alamo Ranch Parkway under Loop 1604.



Loop 1604 – SH 151 is to the east – note the green existing ramp will be reversed as part of the proposed project



Loop 1604 at Alamo Ranch Parkway – and new tie in with SH 151

Why are we looking at a Super Street along 1604? *While the Loop 1604 Environmental Impact Statement (www.Morefor1604.com) is ongoing, no new capacity (new through lanes of traffic) can be added to Loop 1604. Local leaders recognize that waiting until 2012 for relief on Loop 1604 is not beneficial for our community, and the Loop 1604 Super Street, an interim measure to help get traffic moving as soon as possible, is being pursued to bring relief to this growing corridor in our community.*

Is there funding for these proposed improvements? *Yes there is! At the May 2010 meeting of the San Antonio Bexar County Metropolitan Planning Organization, funding was approved for construction of the proposed improvements shown.*

Funding Source	Amount
<i>American Recovery and Reinvestment Act (MPO)</i>	<i>\$1,330,000</i>
<i>American Recovery and Reinvestment Act (Rural)</i>	<i>\$1,040,000</i>
<i>Surface Transportation Program – Metro Mobility</i>	<i>\$4,000,000</i>
<i>Local Contribution – Bexar County, Advanced Transportation District and TxDOT indirect</i>	<i>\$1,367,639</i>
Total Funding	\$7,737,639

Additionally, Bexar County, both with General Fund dollars and funding from the Advanced Transportation District, has funded the initial environmental and engineering work necessary to move this project forward.

The Alamo RMA is serving to secure the environmental clearance and oversee the initial design, and construction of these proposed improvements will be handled by TxDOT.

The proposed Loop 1604 Super street represents a community collaboration to bring relief to this congested part of our community.

What happens next? *After the May 25, 2010 public meeting and open house, the environmental documents necessary to obtain permission to construct the Loop 1604 Super Street will be completed, and once environmental clearance is received, construction could be the first part of 2011 – with some work possibly starting this year!*